



XP DCOM Issues

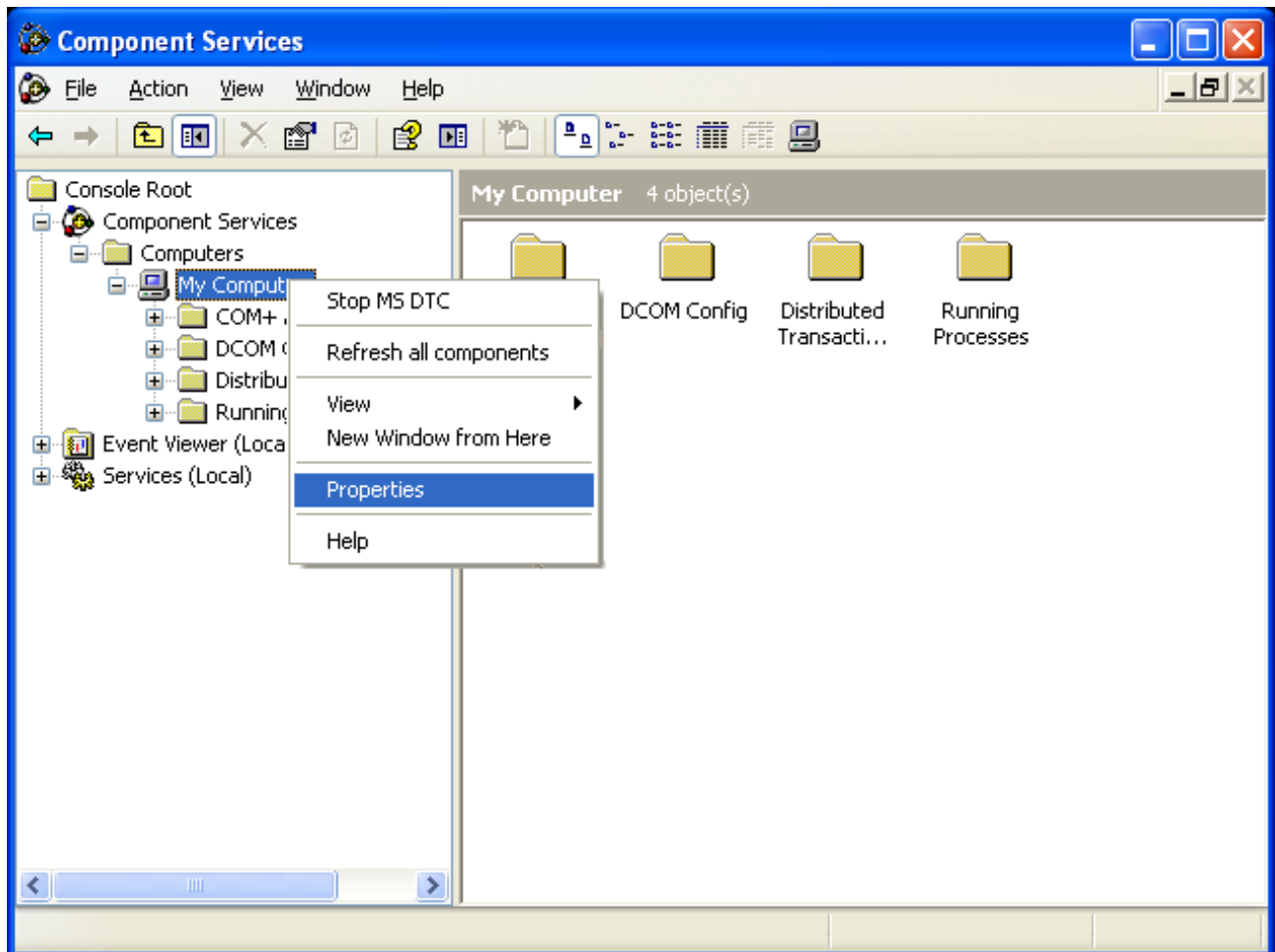
Use the **F1** button on any page of a ThinManager wizard to launch Help for that page.

Visit www.thinmanager.com/TechNotes4/01_Intro/Manuals.shtml to download the manual, manual chapters, or the abridged ThinManual.

Using a Windows XP workstation to connect to a ThinManager Server can be blocked by DCOM issues. This Tech Note will explain how to configure the DCOM settings in XP and the ThinManager Server to allow access.

XP Workstation

Open the DCOM **Component Services** by selecting **Start > Control Panel > Administrative Tools > Component Services** or by typing `dcomcnfg` at the command prompt on the XP computer.

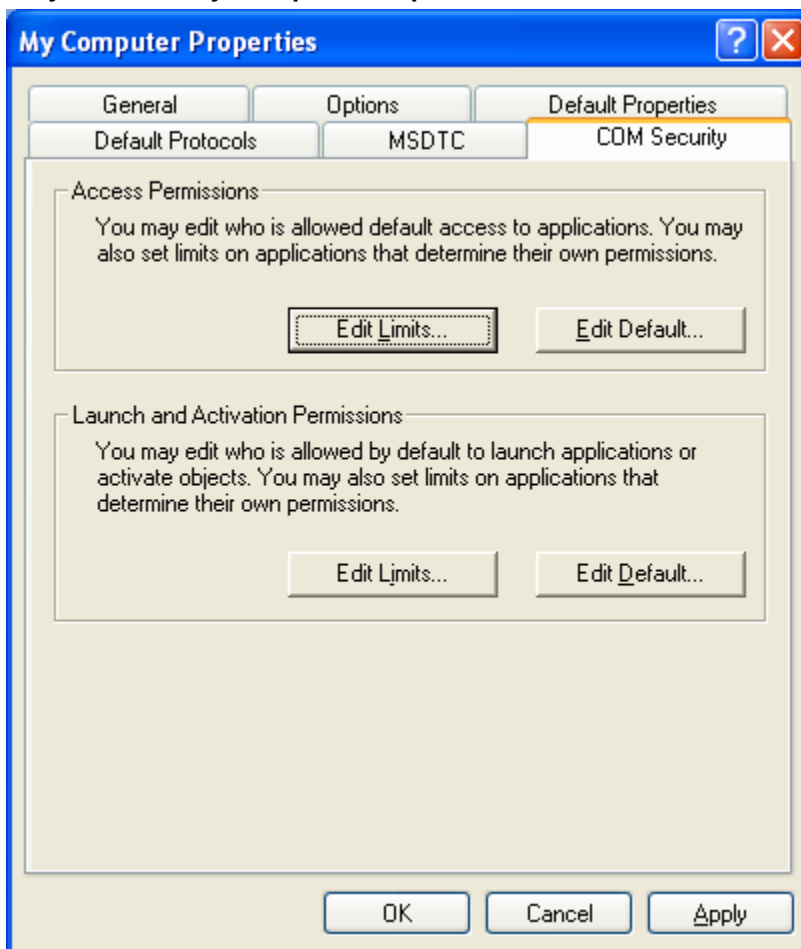


Component Services

Highlight **Console Root > Component Services > Computers > My Computer** then right click and select **Properties**. This will launch a properties window.

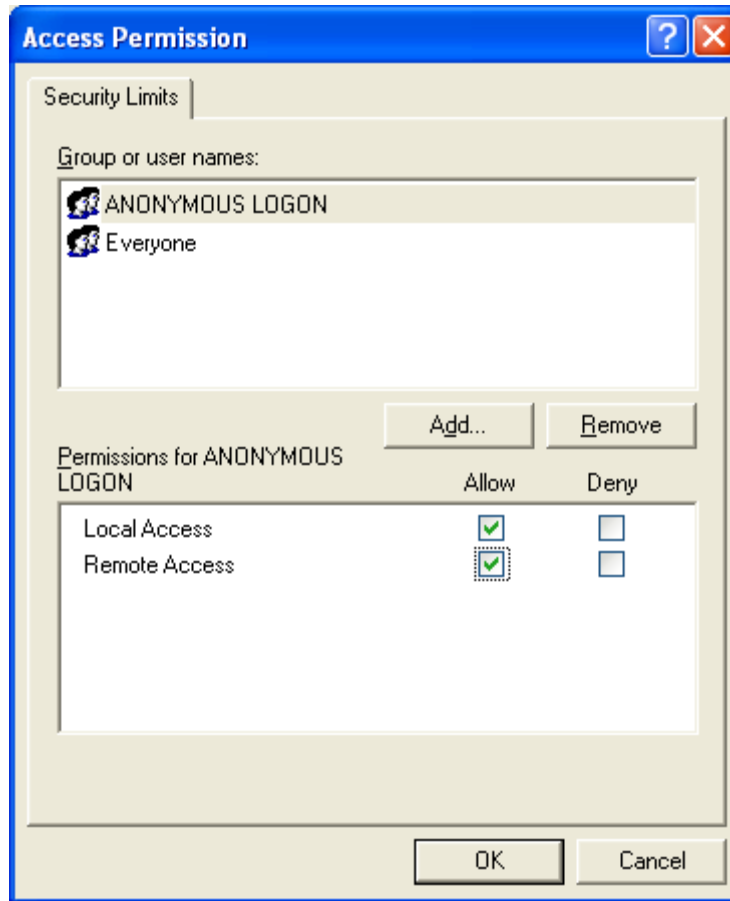


Select the **COM Security** tab of the **My Computer Properties** window.



My Computer Properties Windows

Select the Access Permissions **Edit Limits** button to launch the **Access Permissions** window.



Access Permissions

Make sure that **ANONYMOUS LOGON** is in the **Group or user names** list with both **Local Access** and **Remote Access** set to **Allow** then select **OK** to set the permissions.

ThinManager Server

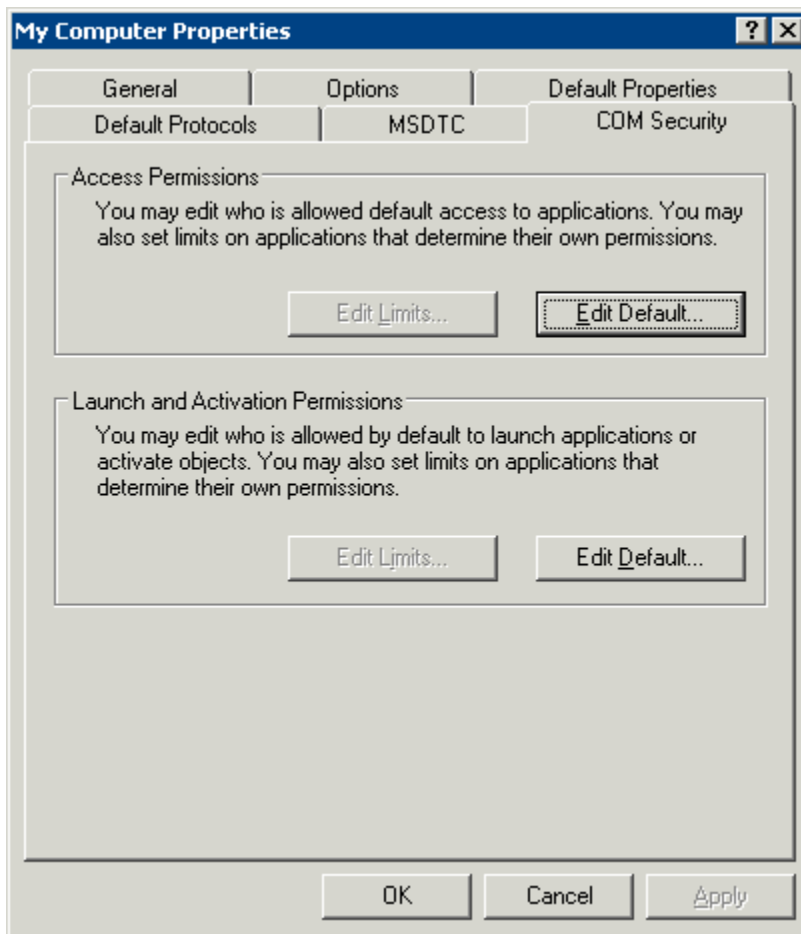
Repeat the procedure listed above to set the Access Permissions of the ThinManager Server. (Open Component Services, open the My Computer Properties, select the COM Security tab, select Edit Limits).

Make sure that the user or group you want to connect to the ThinManager Server is in the **Group or user names** list with both **Local Access** and **Remote Access** set to **Allow** then select **OK** to set the permissions.

Once the access properties have been set, a user or group member from the access list can connect from the XP computer to the ThinManager Server.



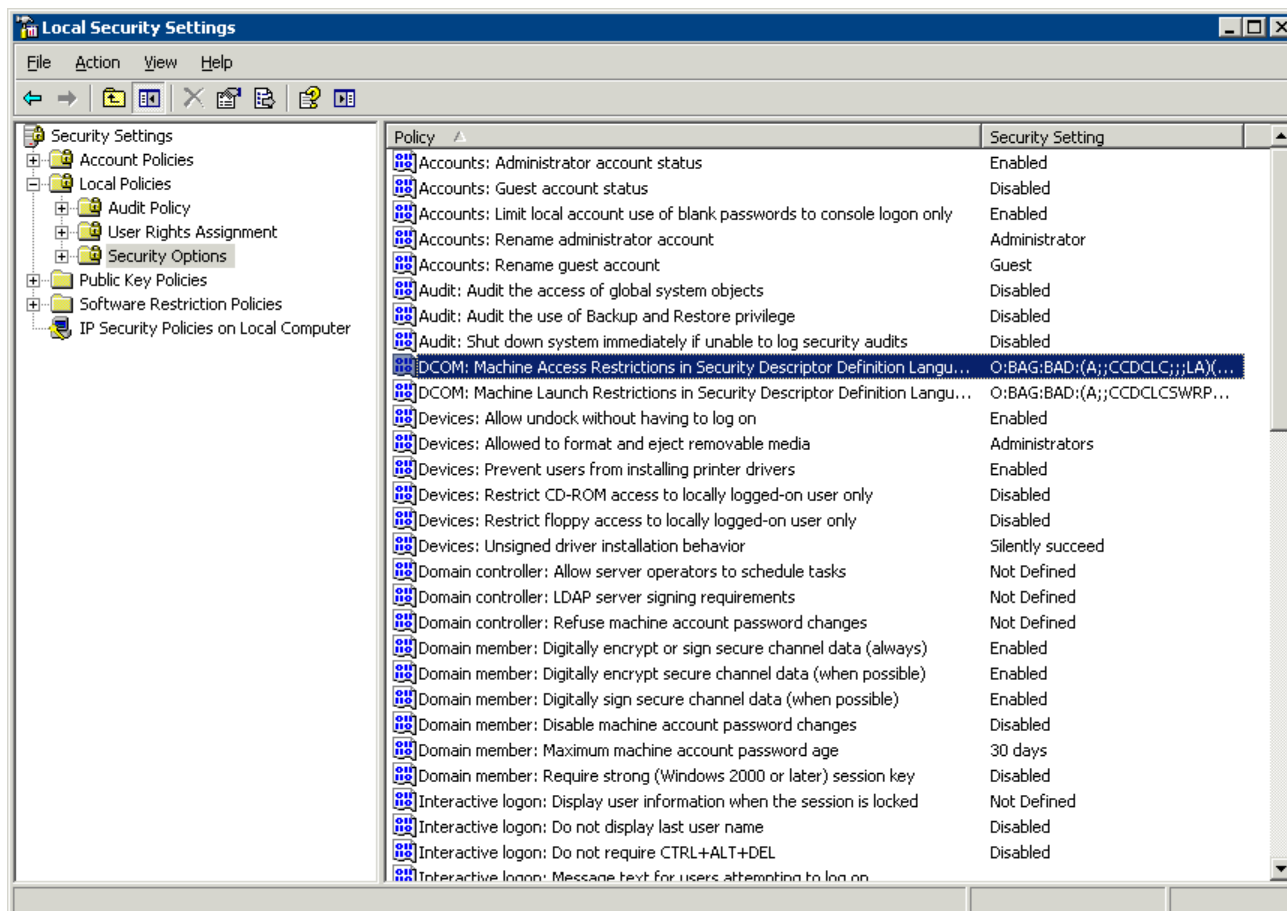
Local Security Policy



Edit Limits Denied

If the ThinManager Server does not allow the setting of the access permissions through the Component Services console then you must use the local security policy to set permissions.

Type **secpol.msc** at a command prompt on the ThinManager Server. This will launch the **Local Security Settings** console.



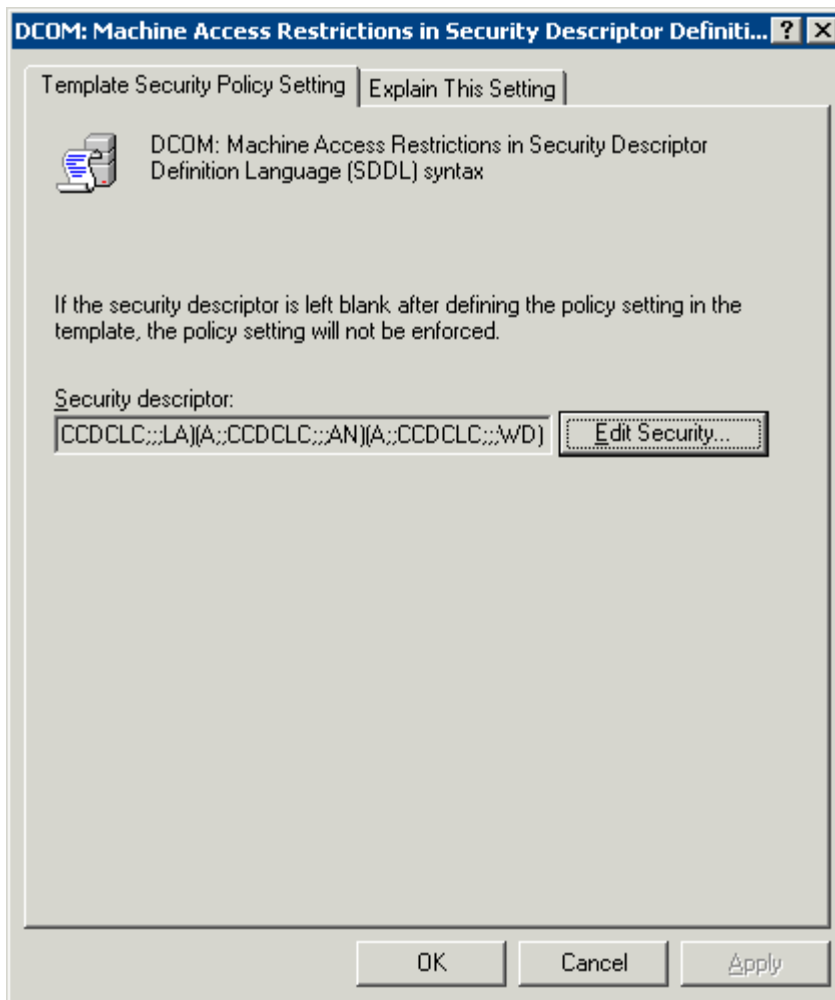
Local Security Settings Console

Expand the console tree and highlight Security Settings > Local Policies > Security Options. There are two important settings:

- DCOM: Machine Access Restrictions in Security Descriptor Definition Language (SDDL) syntax
- DCOM: Machine Launch Restrictions in Security Descriptor Definition Language (SDDL) syntax

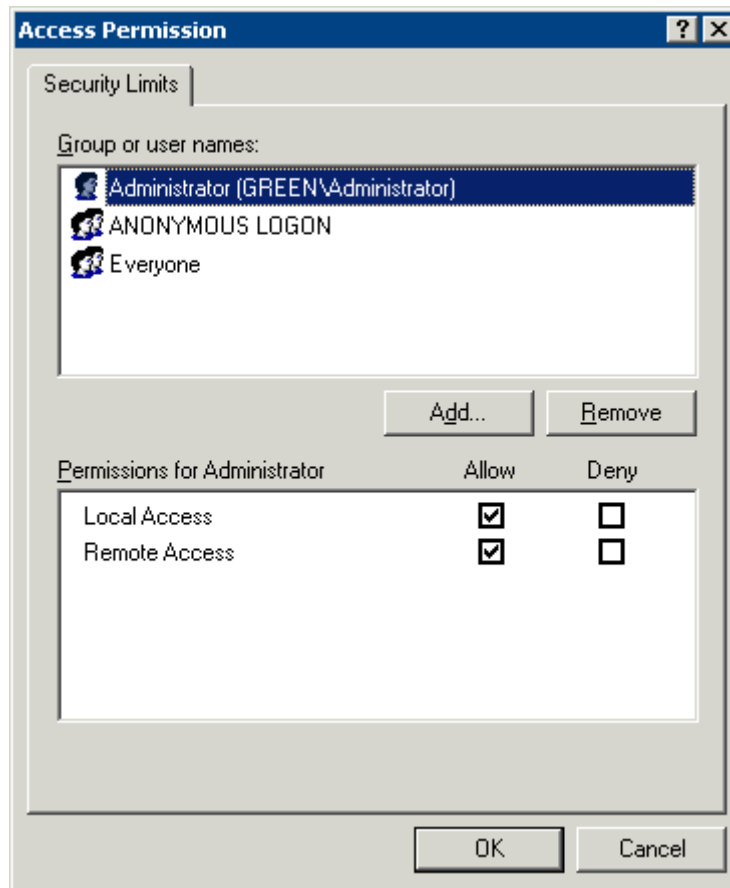
Each setting needs edited.

Double click on the first setting (**DCOM: Machine Access Restrictions in Security Descriptor Definition Language (SDDL) syntax**) to launch the property window.



DCOM Security Setting Property Window

Select the **Edit Security** button on the **Template Security Policy Setting** tab to launch the **Access Permissions** window.



Access Permissions Window

Make sure that the user or group you want to connect to the ThinManager Server is in the **Group or user names** list with both **Local Access** and **Remote Access** set to **Allow** then select **OK** to set the permissions.

Repeat this procedure with second setting (**DCOM: Machine Launch Restrictions in Security Descriptor Definition Language (SDDL) syntax**).

Once the user or group has been granted DCOM access on both computers the user should be able to connect from the XP computer to the ThinManager Server.