

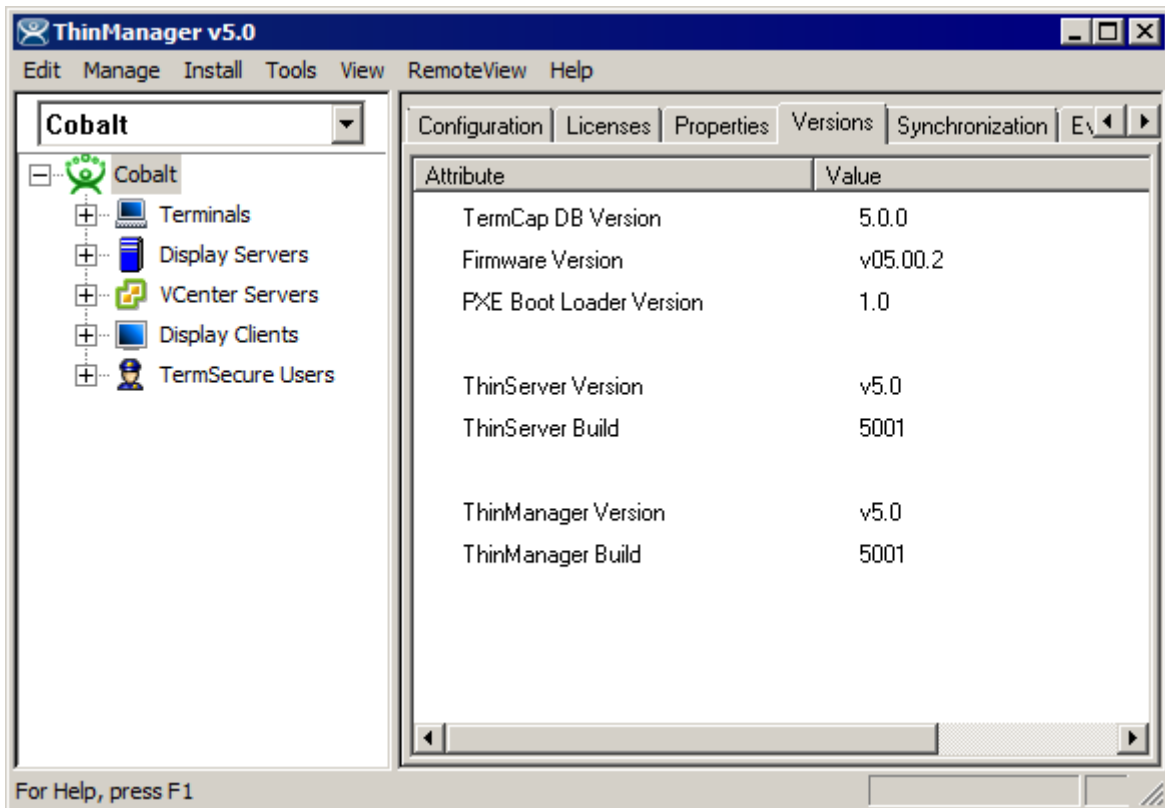
ThinManager Version Numbers

Use the **F1** button on any page of a ThinManager wizard to launch Help for that page.

Visit www.thinmanager.com/technotes/ to download the manual, manual chapters, or the ThinManual.

ThinManager has three components, the **ThinServer** service that is the engine that runs the system, the **ThinManager** interface that allows control of the ThinServer service, and the **firmware** that is loaded as the operating system on the thin clients.

Because these components can be updated independently of each other, one needs to use the **Versions** tab in ThinManager to determine the version numbers of the components.



Versions Tab in ThinManager

Highlight the ThinManager Server in the tree; "Cobalt" is the computer in the example.

Select the **Versions** tab of the Details pane to view the build numbers.



Build Numbers for ThinManager

ThinManager 5.0 SP2		
1/16/2012	ThinManager Build	5003
	ThinServer Build	5004
	Firmware	5.0.7
ThinManager 5.0 SP1		
8/29/2011	ThinManager Build	5001
	ThinServer Build	5001
	Firmware	5.0.2
ThinManager 5.0		
7/6/2011	ThinManager Build	5000
	ThinServer Build	5000
ThinManager 4.1 SP2		
8/26/2011	ThinManager Build	4102
	ThinServer Build	4102
ThinManager 4.1 SP1		
7/13/2010	ThinManager Build	4101
	ThinServer Build	4101
ThinManager 4.1		
4/18/2010	ThinManager Build	4100
	ThinServer Build	4100
ThinManager 4.0 SP3		
7/23/2010	ThinManager Build	4007
	ThinServer Build	4007
ThinManager 4.0 SP2		
5/5/2010	ThinManager Build	4006
	ThinServer Build	4006
ThinManager 4.0 SP1		
2/18/2010	ThinManager Build	4005
	ThinServer Build	4005
ThinManager 4.0		
12/30/2009	ThinManager Build	4003
	ThinServer Build	4003



ThinManager 3.3 SP 1		
7/6/2009	ThinManager Build	3310
	ThinServer Build	3312
ThinManager 3.3		
4/09/2009	ThinManager Build	3309
4/10/2009	ThinServer Build	3311
ThinManager 3.2 SP1		
10/16/2008	ThinManager Build	3206
	ThinServer Build	3208
ThinManager 3.2		
7/3/2008	ThinManager Build	3205
	ThinServer Build	3205
ThinManager 3.1 SP2		
7/28/2008	ThinManager Build	3022
	ThinServer Build	3020
ThinManager 3.1 SP1		
10/26/2007	ThinManager Build	3021
	ThinServer Build	3018
ThinManager 3.1		
6/27/2007	ThinManager Build	3019
	ThinServer Build	3015
ThinManager 3.0 SP6		
3/5/2007	ThinManager Build	3012
11/2/2006	ThinServer Build	3010
ThinManager 3.0 SP5		
10/16/2006	ThinManager Build	3009
	ThinServer Build	3009
ThinManager 3.0 SP4		
10/4/2006	ThinManager Build	3008
	ThinServer Build	3008
ThinManager 3.0 SP3		
7/31/2006	ThinManager Build	3007
	ThinServer Build	3007



ThinManager 3.0 SP2		
6/14/2006	ThinManager Build	3006
	ThinServer Build	3006
ThinManager 3.0 SP1		
5/9/2006	ThinManager Build	3004
	ThinServer Build	3004
ThinManager 3.0		
5/3/2006	ThinManager Build	3003
	ThinServer Build	3003
ThinManager 2.6 SP2		
5/10/2006	ThinManager Build	2586
	ThinServer Build	2586
ThinManager 2.6 SP1		
6/23/2005	ThinManager Build	2583
	ThinServer Build	2583
ThinManager 2.6		
11/14/2005	ThinManager Build	2582
	ThinServer Build	2582

Firmware Version Numbers

ThinManager 5.0	V5.0.x
ThinManager 4.0	v4.0.x
ThinManager 3.3	v3.03.x
ThinManager 3.2	v3.02.x
ThinManager 3.1	v3.01.x
ThinManager 3.0	v3.00.x
ThinManager 2.6	v2.06.x

Older versions of ThinManager can run newer firmware. ThinManager 2.6 can use firmware v3.02.6, for example.