

Watchdogs to Kill Processes

Use the **F1** button on any page of a ThinManager wizard to launch Help for that page.

Visit www.thinmanager.com/technotes/ to download the manual, manual chapters, or the ThinManual.

AppLink allows you to launch a single application in a session, restricting access to other programs. If the application ends then the session will end. ThinManager has the thin client immediately reconnect and start a new session running the application.

If the application launches additional programs the session won't close as the child applications keep the session active. ACP has developed techniques and watchdog functions to monitor and correct this.

If the Application Locks Up but Stays Alive

The TermMon ActiveX has a watchdog function built into it. If you register the TermMon ActiveX and embed it into your program you can use the WatchdogTime function to kill all locked up session.

You set the watchdog to a number, say 10, and reset it every time the watchdog hits a lower number, say 3.

As long as the application is functioning properly it will keep setting the watchdog. If it locks up it is unable to update the watchdog, the watchdog counts down to zero, and then will kill the session. Once the session is killed the thin client will automatically reconnect and start a new session with the application running.

See our ActiveX tech notes at www.thinmanager.com/technotes/12_Misc/ActiveXFunction.pdf or www.thinmanager.com/technotes/12_Misc/ActiveXData.pdf.

If the Application Exits but Leaves Child Applications Running

If the AppLink application launches additional programs and then fails, those additional programs can keep the session open. If the application exits instead of locking up then the TermMon ActiveX will be gone with the program and it won't be able to kill the session. What is needed is a method that kills the session if an application fails.

There is a series of commands that will launch a program, then will wait until it ends. Once it ends it will close the session. Once the session closes the thin client will launch another session.

First:

Use a batch file to launch your program.

Use the following two commands in the batch file. The phrase "path/program.exe" is the path to the executable that you want to run:

```
start /wait path/program.exe
shutdown /f /l
```

Start launches the program specified as "path/program.exe"

/wait causes the batch file to wait until the path/program.exe process ends.

Shutdown will close the program. Use the following arguments:

/f forces the application to close immediately.

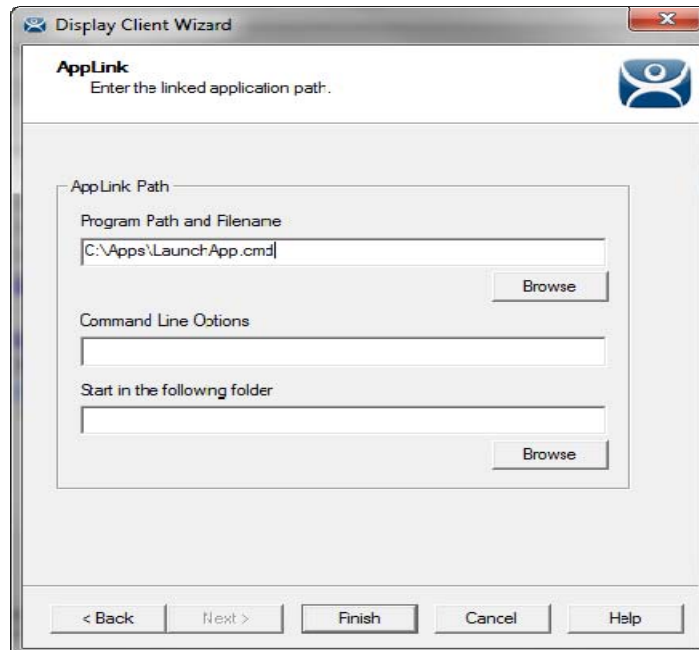
/l logs off the current user immediately.



Second:

Create a Terminal Services Display Client using AppLink, "LaunchApp" in this example.

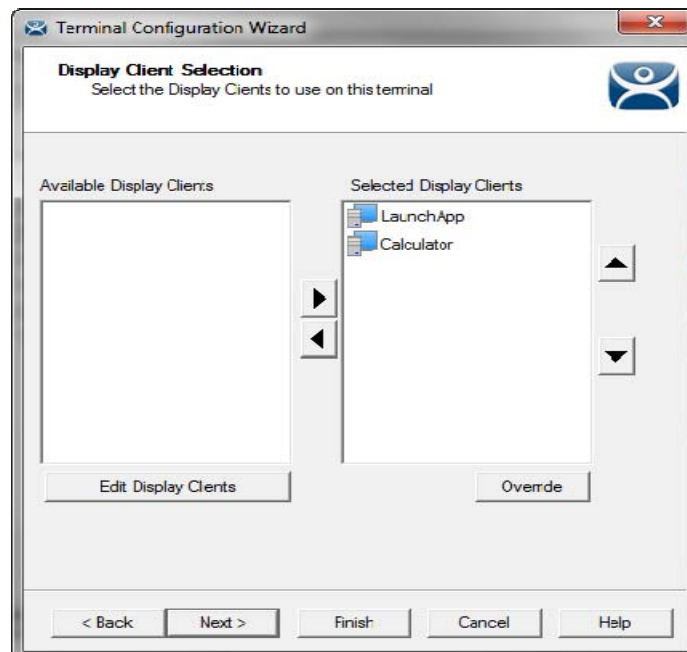
Put the path to the batch file, "LaunchApp.cmd" in this example, in the **AppLink Program Path and Filename** field.



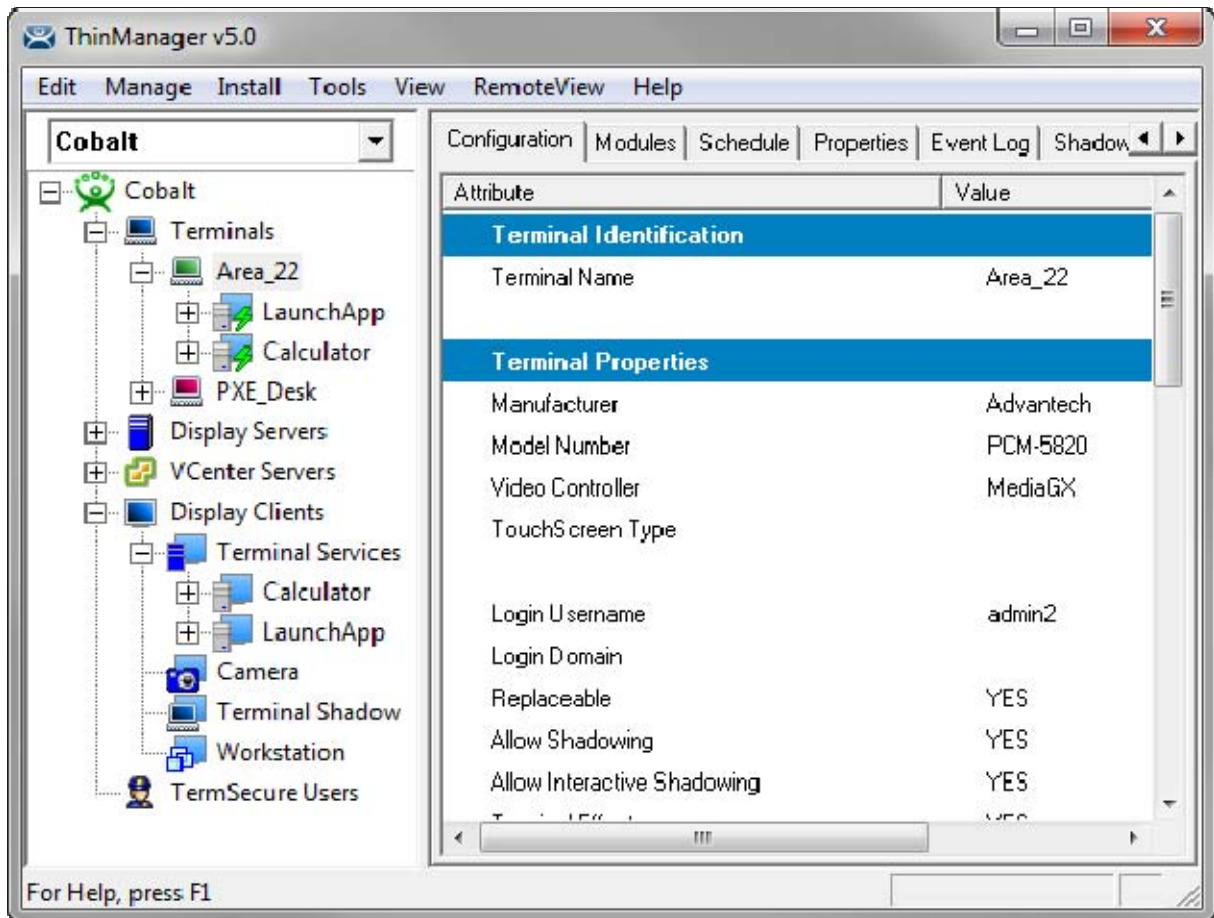
Terminal Services Display Client

Third:

Add the Terminal Services Display Client to the Thin Client.



Terminal Configuration Wizard



Display Client on Terminal

The application will launch when the thin client is turned on. If the process stops then the command will log off the user, close the session, and allow the terminal to reconnect to the terminal server, starting a new session.