

ThinManager and Active Directory

Use the **F1** button on any page of a ThinManager wizard to launch Help for that page.

Visit <http://www.thinmanager.com/kb/index.php/Special:AllPages> for a list of Knowledge Base articles.

Visit <http://thinmanager.com/support/manuals/> to download any of the manuals.

ThinManager 8 introduces Active Directory integration to the ThinManager platform.

Terminal Users:

Windows accounts are required to start sessions on the terminal server or remote desktop server. Each Terminal needs a unique Windows account. The current Active Directory integration allows the ThinManager administrator to connect to the Active Directory, search for users, and reference an AD account as its Windows account. This can speed configuration and cut down on naming errors.

This also applies to Locations in Relevance.

TermSecure Users:

TermSecure is an additional layer of security provided by ThinManager. There are two modes for TermSecure.

1. It can either hide applications from users unless they log in with the correct access permission.
2. It can be used to apply an application to a user where ever a user logs in, essentially making the application follow the user.

TermSecure Users need a unique Windows account if they have an application tied to it. You can create the TermSecure User with any name and tie it to an AD account, or use the Active Directory to create TermSecure Users that match the AD account.

You can also create a TermSecure group by directly importing the users from an Active Directory Organizational Unit. Users added to the AD OU get automatically added as TermSecure Users, and users deleted from the AD OU get deleted from ThinManager.

Password Management:

ThinManager has added Password Management integration with Active Directory.

For handling AD passwords there are two basic modes:

1. No password stored. In this mode ThinManager does not keep or store the AD user's password. The user is prompted to enter the password when needed.
2. ThinManager maintains password. ThinManager can store and manage the AD password. This means that ThinManager will generate a new password and rotate the password in AD according to a set password policy. This allows you to match your standard password policy and still use the account with ThinManager.

This allows you to set an account in ThinManager and have ThinManager automatically change and update the password.

This Tech Note will cover three sections, User Assignment for Terminals, TermSecure Integration, and Password Management



Requirements:

Active Directory integration requires that the ThinManager Server be a member of a domain. Since Microsoft recommends that Server 2012 be run in a domain, the new Active Directory integration is helpful moving in forward in the Microsoft environment.

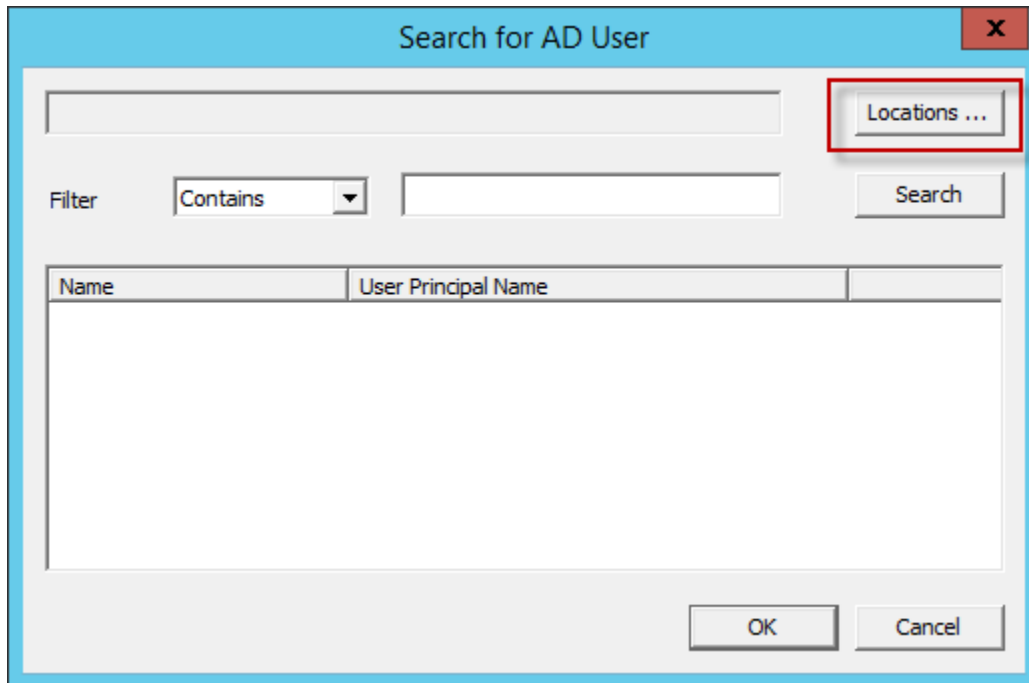
The ThinManager administrator does not need to be a domain administrator, they just need to know the password of each account they reference.

User Assignment for Terminals

ThinManager 8 has added a Search button on each configuration page that assigns users. This button launches a wizard that allows the ThinManager administrator to select a Windows user from the Active Directory pool.

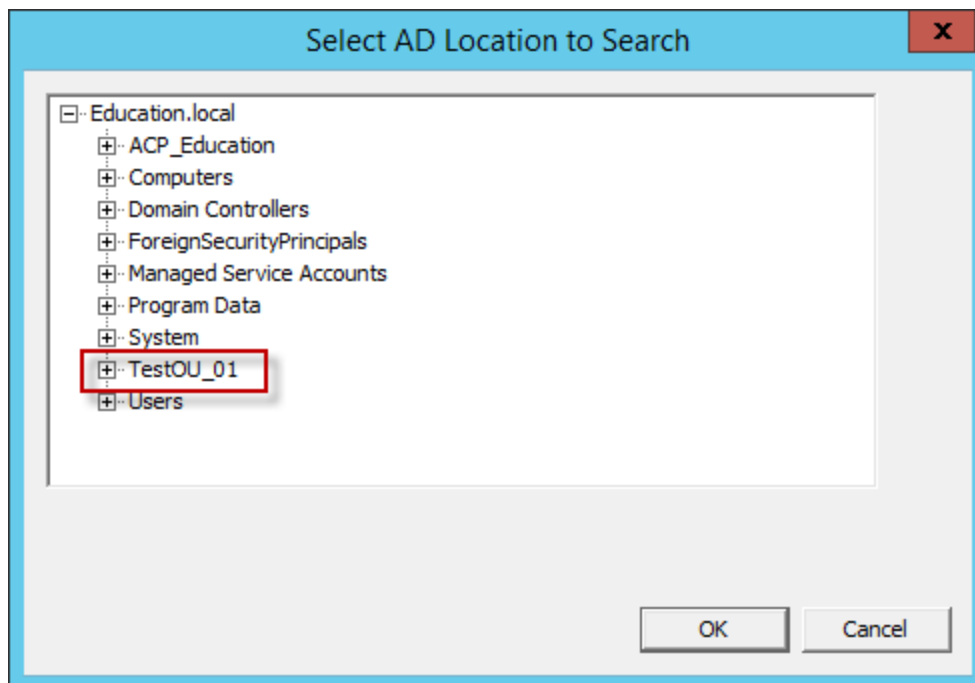
Log In Information Page of the Terminal Configuration Wizard

The **Search** button on the **Log In Information** page of the Terminal Configuration Wizard will open will open the **Search for AD User** window. This wizard begins the process of adding and Active Directory user as the Terminal Windows user.



Search for AD User

Click the **Locations...** button on the **Search for AD User** window to choose where to select users.



Select AD Location to Search

Clicking the **Locations...** button will launch the **Select AD Location to Search** window. Highlight the domain branch you want to use and select the **OK** button.



Search for AD User

TestOU_01

Locations ...

Filter: Contains

Search

Name	User Principal Name
------	---------------------

OK Cancel

Search for AD User Window

Selecting the **Search** button will fetch the user accounts and populate the **Search for AD User** window.

Search for AD User

TestOU_01

Locations ...

Filter: Contains

Search

Name	User Principal Name
Becky Thatcher	bthatcher@Education.local
Huck Finn	hfinn@Education.local
Mark Twain	mtwain@Education.local
Test Admin01	TestAdmin01@Education.local
Test01	Test01@Education.local
Test02	Test02@Education.local
Test03	Test03@Education.local
Test04	Test04@Education.local
Test05	Test05@Education.local
Tom Sawyer	tsawyer@Education.local

OK Cancel

Populated Search for AD User Window

Highlight the domain user you want and select the **OK** button. This will reference the user for the terminal log in account.



The image shows a screenshot of the 'Terminal Configuration Wizard' window. The title bar is blue with a close button (X) on the right. Below the title bar, the window has a light blue header area with the text 'Log In Information' and a sub-instruction: 'Enter the log in information to log in automatically. Leave the log in information blank or fill only some of the fields to force manual log in.' To the right of this text is a small icon of a person. The main content area is white and contains a group box titled 'Windows Log In Information'. Inside this group box, there are three input fields: 'Username' (containing 'mtwain@Education.local'), 'Password' (empty), and 'Domain' (empty). To the right of the 'Username' field is a 'Search' button. To the right of the 'Password' field is a 'Password Options' button. Below the 'Domain' field is a 'Verify' button. At the bottom of the window, there are five buttons: '< Back', 'Next >', 'Finish', 'Cancel', and 'Help'. Red rectangular boxes are drawn around the 'Password' field and the 'Verify' button.

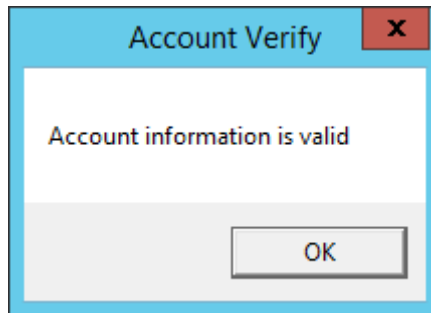
Log In Information Page of the Terminal Configuration Wizard

Once the domain user is loaded into the **Username** field of the **Log In Information** window of the **Terminal Configuration Wizard** you can enter the password and select the **Verify** button to check its accuracy.

The image shows a screenshot of the 'Account Verify' dialog box. The title bar is blue with a close button (X) on the right. The main content area is white and contains a yellow warning triangle icon on the left and the text 'Account information is not valid' on the right. At the bottom right of the dialog box is an 'OK' button.

Account Verify Dialog

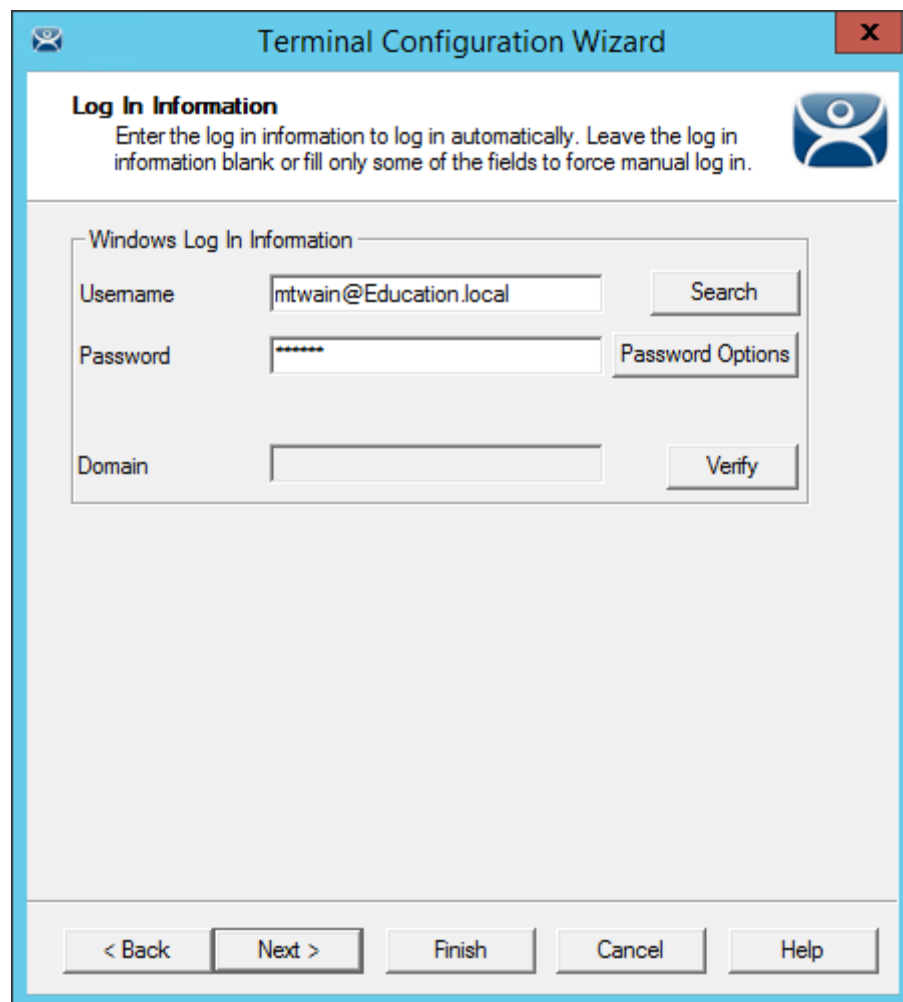
If the password is incorrect a message will be displayed saying that the account is not valid.



Account Verify Dialog

If the password is correct a message will be displayed saying that the account is valid.

You have successfully reference an Active Directory account for the terminal and you may proceed to finish the Terminal Configuration Wizard at this point.



Terminal Server Name Page

This shows the result of adding an Active Directory account as the user account of a terminal.



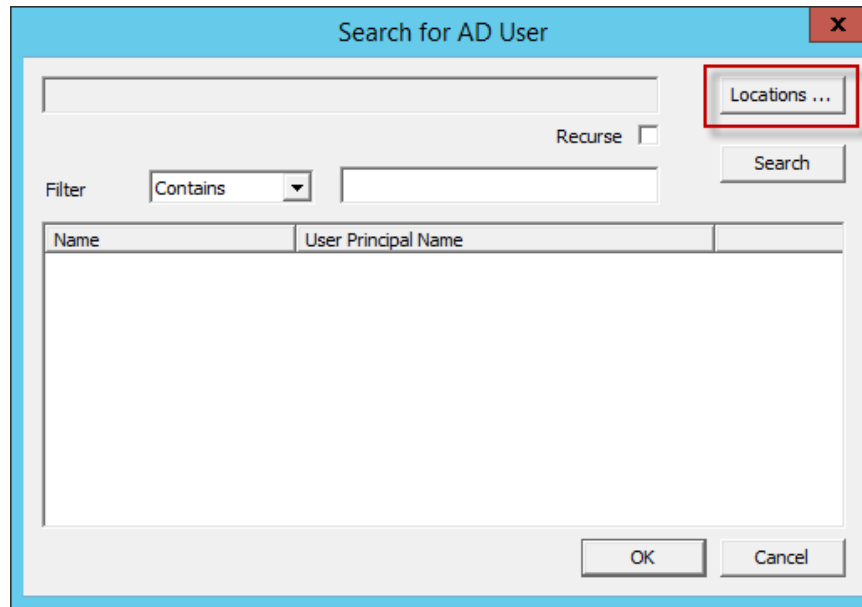
TermSecure Integration

ThinManager Active Directory integration allows a TermSecure User to have its Windows user account drawn from the Active Directory. You can allow ThinManager to store the password to streamline password management.

The first page of the **TermSecure User Configuration Wizard** is the **TermSecure User Information** page that creates the TermSecure User account.

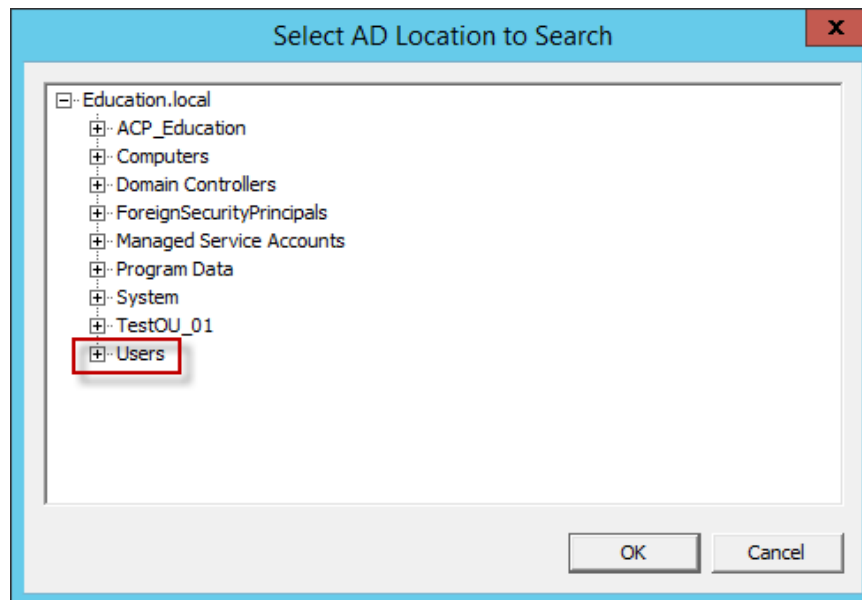
TermSecure User Information

Selecting the **Active Directory User** checkbox allows you to draw the user account from the Active Directory. Select the **Search** button to begin the Active Directory process by launching the **Search for AD User** window.



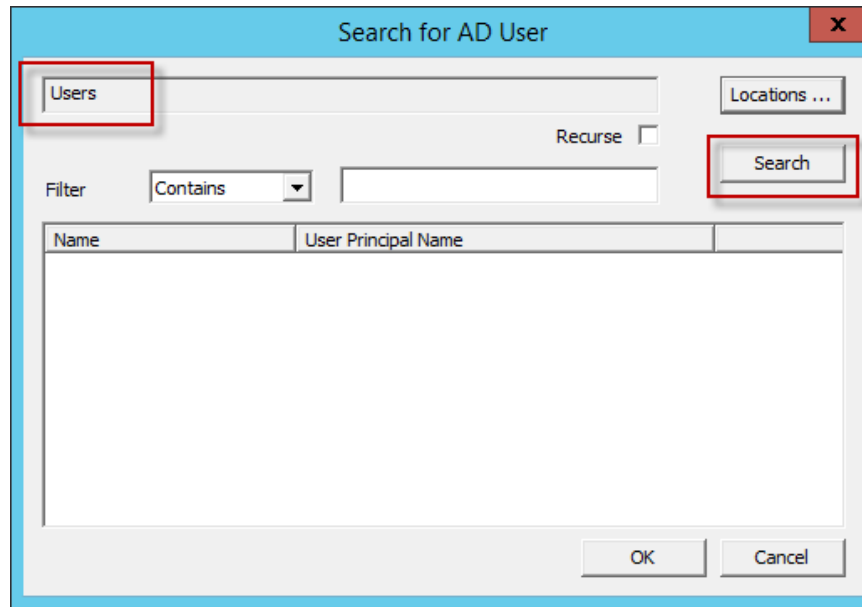
Search for AD User Window

Select the Locations button on the Search for AD User window to choose a location. This will launch the **Select AD Location to Search** window.



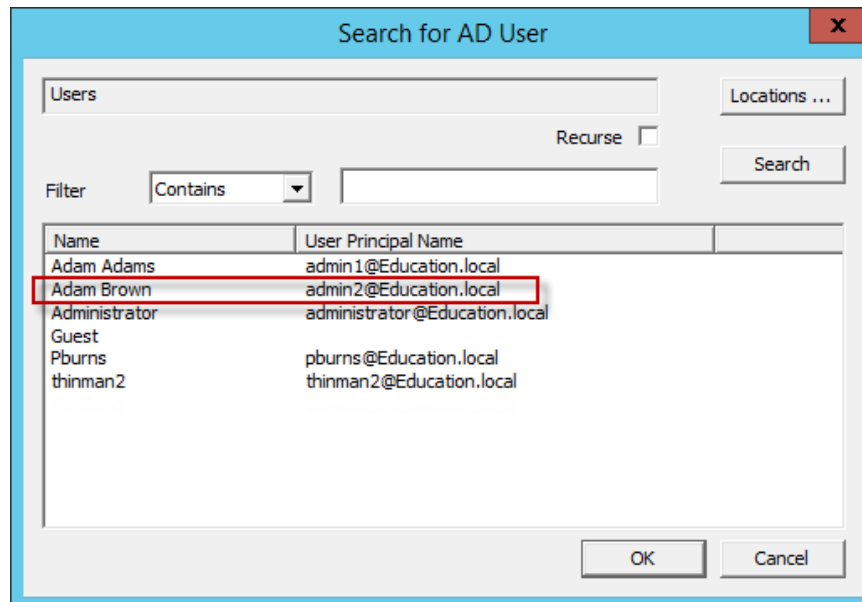
Select AD Location to Search Window

Highlight the AD location you want to select the user from and select the **OK** button. This will enter the location into the **Locations** field in the **Search for AD User** window.



Search for AD User Window – Location Selected

Once the Location has been selected click the **Search** button to populate the user field with users from the highlighted location.



Search for AD User Window – Users

Highlight the desired user account from the Active Directory members and select the **OK** button. This will enter the user account in the **AD User Name** field of the **TermSecure User Information** page.



TermSecure User Configuration Wizard

TermSecure User Information
Enter TermSecure username, password and permission information.

☒ Active Directory User

Relevance User Information

AD User Name

Group

Copy Settings

☐ Copy Settings from another User

< Back **Next >** Finish Cancel Help

TermSecure User Information Window

This shows an Active Directory user in the **AD User Name** field.

Select the **Permission** button to apply membership in Access Groups as shown in **Error! Reference source not found.** on page **Error! Bookmark not defined.**

Select the **Finish** button if you only need a **Permission** applied.

Select the **Next** button if you want to apply user-specific display clients.



Active Directory Password Page

The **Active Directory Password** page has an **Allow ThinManager to store password** checkbox. If this is unchecked then ThinManager does not store the account and you must enter a password each time the session logs on. This is fine if you are planning on requiring a TermSecure password anyhow. If the **Allow ThinManager to store password** checkbox is checked then you can have the Windows password stored in ThinManager. This allows a fingerprint scan to send the Windows password automatically for authentication.

If the **Allow ThinManager to store password** checkbox is checked you can use the system defaults or uncheck the **Use System Default Password Settings** to customize the password settings.

The password settings include

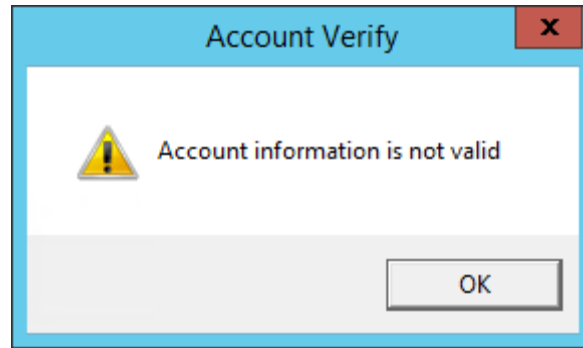
Password Complexity Requirements:

- **Minimum Password Length** – This is the minimum number of characters a password may have.
- **Maximum Password Length** – This is the maximum number of characters a password may have.

Password Maintenance:

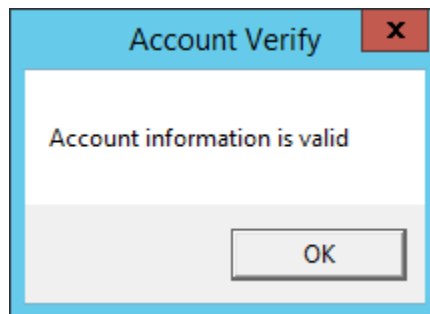
- **Rotate Password every** – This is the number of days before the password must be changed.

Enter the user password in the **Password** field and select the **Verify** button to check if it is a valid password.



Account Verify Dialog - Fail

Selecting the **Verify** button will check your password against the Active Directory. If it is incorrect it will show a failed dialog.



Account Verify Dialog - Pass

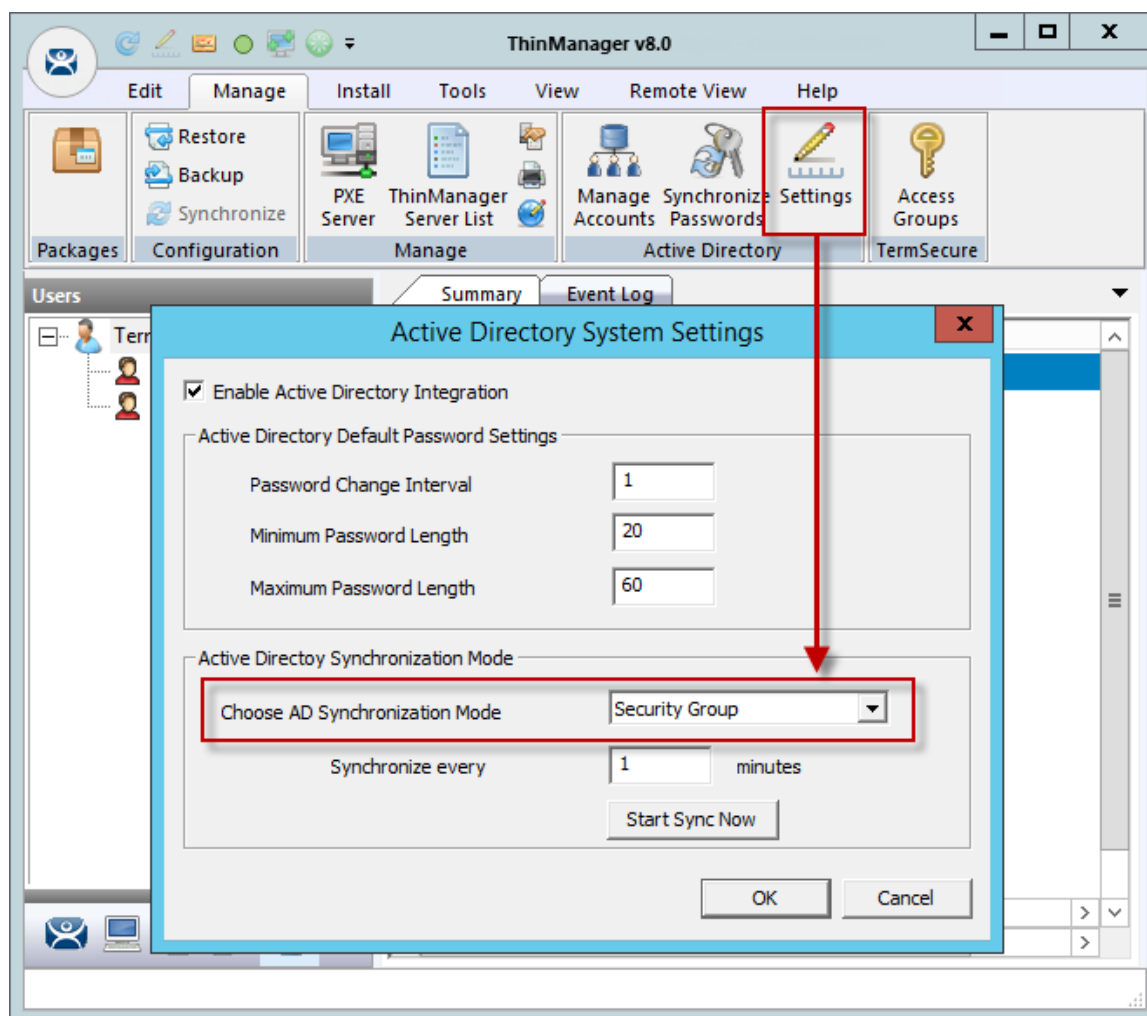
If the password is correct the dialog will show a positive result.

The rest of the TermSecure User Configuration Wizard follows the instructions in **Error! Reference source not found.** on page **Error! Bookmark not defined.**

Batch Create TermSecure Users using Active Directory OU

You can create TermSecure Users in a batch, either by selecting one Windows Security Group or multiple Active Directory organizational units (OU).

You can select multiple OUs but only one Security Group because a user can only reside in one OU but they can be members in multiple Security Groups. Limiting to a single Security Group prevent duplicate accounts.



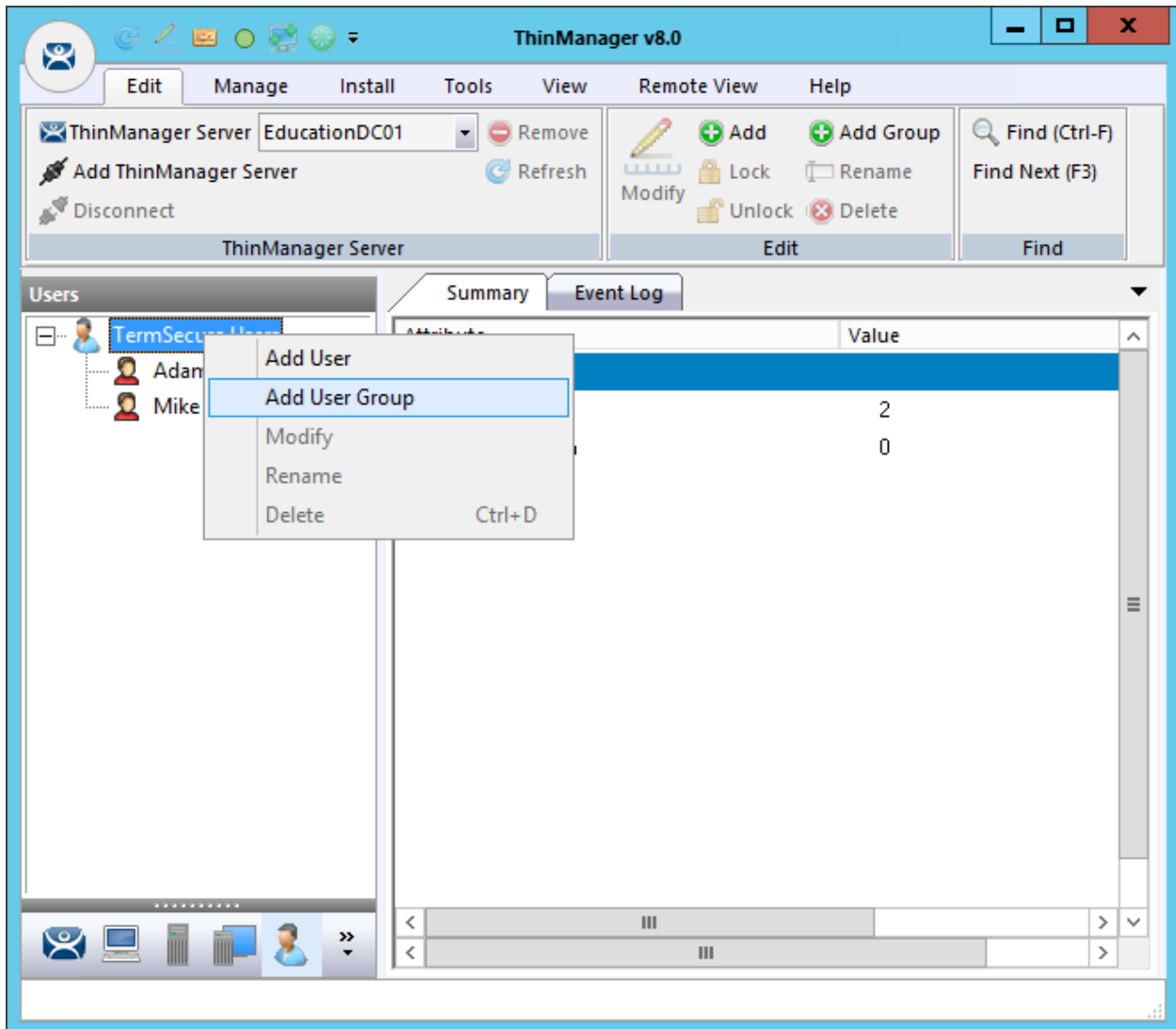
Active Directory System Settings

Select **Manage > Active Directory Settings** to launch the **Active Directory System Settings** window.

A screenshot of the 'Active Directory System Settings' window. The window has a blue title bar with the text 'Active Directory System Settings' and a red close button. Inside, there is a checkbox labeled 'Enable Active Directory Integration' which is checked. Below this is a section titled 'Active Directory Default Password Settings' containing three input fields: 'Password Change Interval' with the value '1', 'Minimum Password Length' with the value '20', and 'Maximum Password Length' with the value '60'. Another section titled 'Active Directory Synchronization Mode' contains a dropdown menu labeled 'Choose AD Synchronization Mode' with 'Organizational Unit' selected, a 'Synchronize every' field with the value '1' and the unit 'minutes', and a 'Start Sync Now' button. At the bottom right are 'OK' and 'Cancel' buttons.

Active Directory System Settings window

Select either **Organizational Unit** or **Security Group** in the **Choose AD Synchronization Mode** drop-down. This manual will show the batch creation of TermSecure Users using Active Directory Organizational Units. Select **OK** to close.



Add User Group Command

TermSecure User Groups are defined using the **TermSecure User Configuration Wizard**. It is launched by selecting the **User icon** at the bottom of the ThinManager tree, right clicking on the **TermSecure User** branch, and selecting **Add User Group**.

This will launch the **TermSecure User Configuration Wizard** for the TermSecure User Group.



TermSecure User Configuration Wizard

TermSecure User Group Information
Enter the TermSecure User Group name.

☐ AD Synchronization Group

Group Name

User Name

Password

Verify Password

Password Options

Group Setting ☐

Group

Change Group

Permissions

Please enter a name

< Back Next > Finish Cancel Help

TermSecure User Group Information Page

Check the **AD Synchronization Group** checkbox on the **TermSecure User Group Information** page. This will change the **User Name** field to an **Organizational Unit** field.

TermSecure User Configuration Wizard

TermSecure User Group Information
Enter the TermSecure User Group name.

☒ AD Synchronization Group

Group Name

Organizational Unit

Search

Group

Change Group

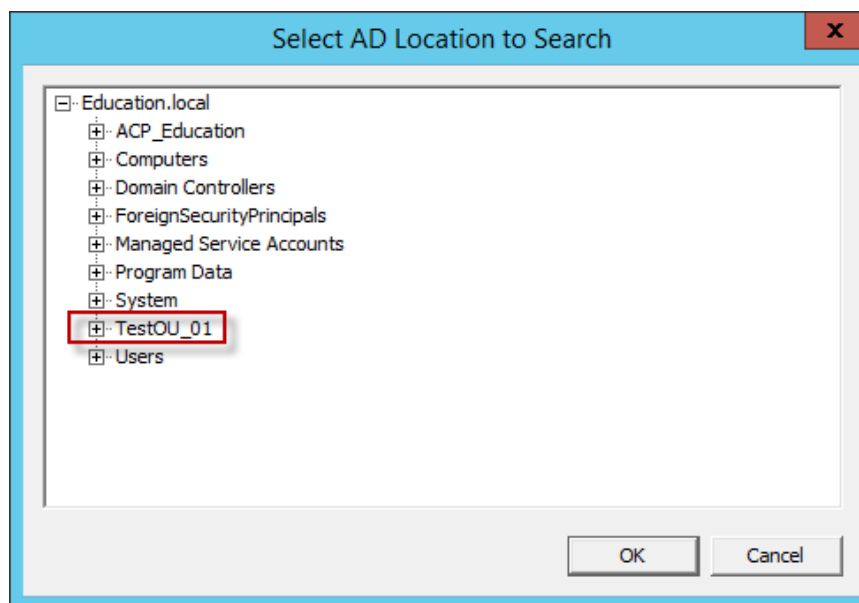
Permissions

Please enter a name

< Back Next > Finish Cancel Help

TermSecure User Group Information Page

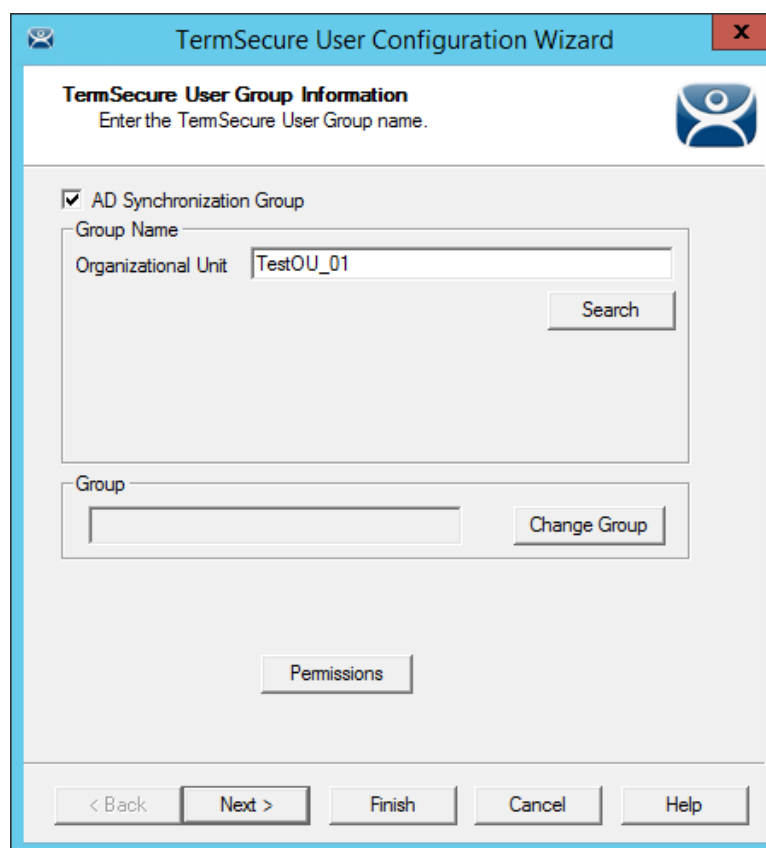
Select the **Search** button to launch the **Select AD Location to Search** window.



Select AD Location to Search Window

The **Select AD Location to Search** window will list the Organizational Units for the domain that the ThinManager Server is a member.

Highlight the desired Organizational Unit and select the **OK** button.



TermSecure User Group

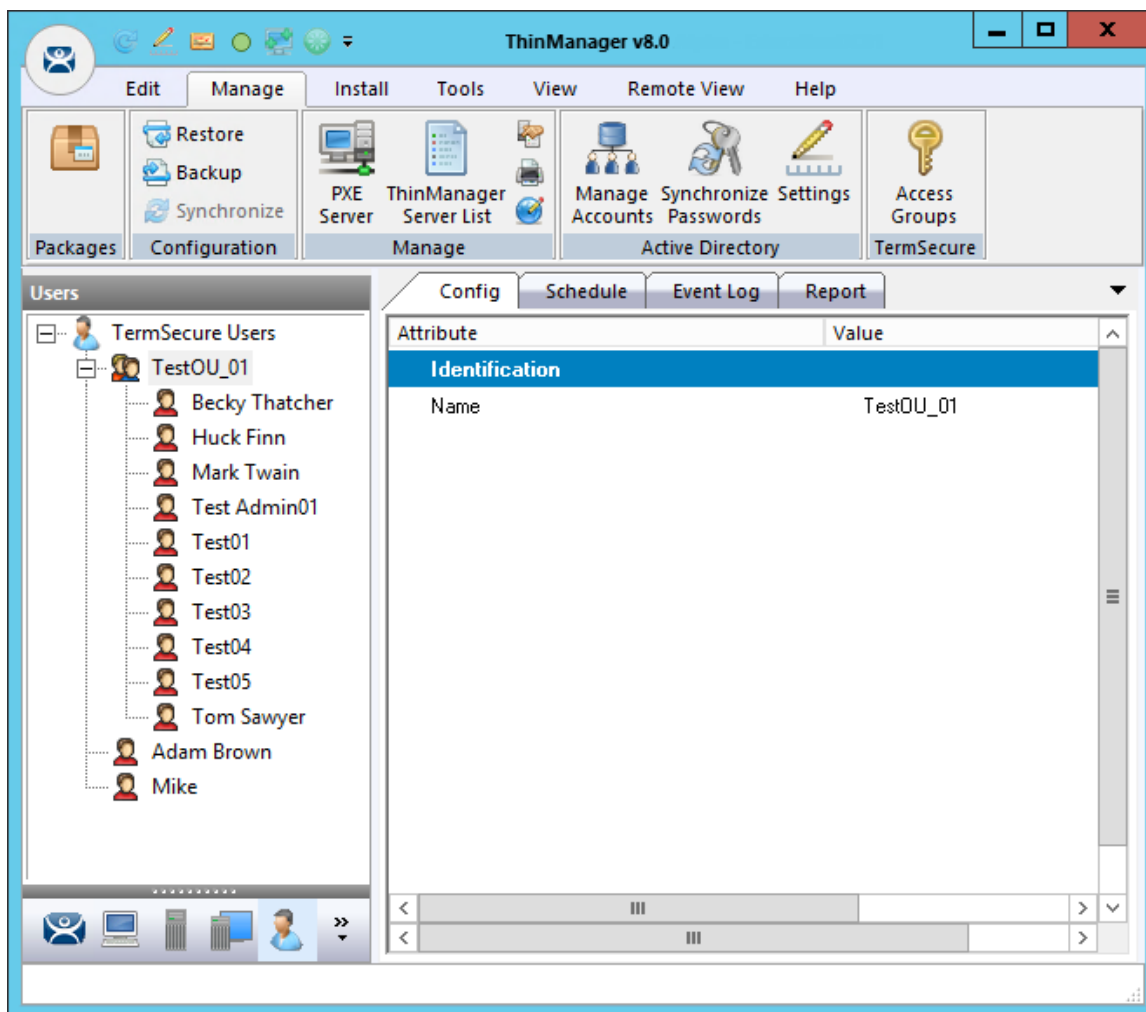
This will name the **TermSecure User Group** after the Organizational Unit. Select **Next**.



Group Settings

Once a TermSecure User Group is created a **Group Setting** checkbox appears on each page. Selecting this checkbox will apply the setting to all members of the group. This speeds configuration by have a change applied to all members at once.

You may select **Finish** now or select **Next** to complete the entire wizard.

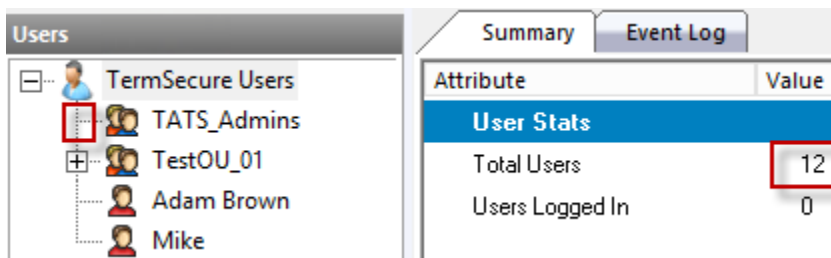


TestOU_1 TermSecure User Group

Once the Finish button is selected the TermSecure User Group will be created. It may take some time to populate the TermSecure User Group depending on the Active Directory size.

Once populated all members of the Organizational Unit will show up as members of the TermSecure User Group.

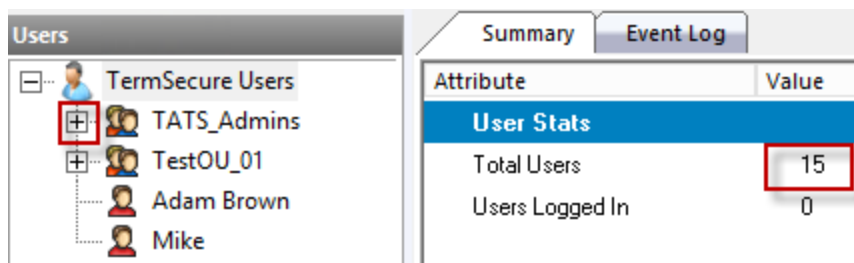
Users added to AD will be added to the ThinManager tree, users deleted from AD will be removed from the ThinManager tree.



TermSecure User Group Created but Not Populated

One way to see if the users are created is to monitor the Total Users count by highlighting the TermSecure User branch in the ThinManager tree.

When the TermSecure User group is first created it won't have an expansion box and the user count won't have increased.



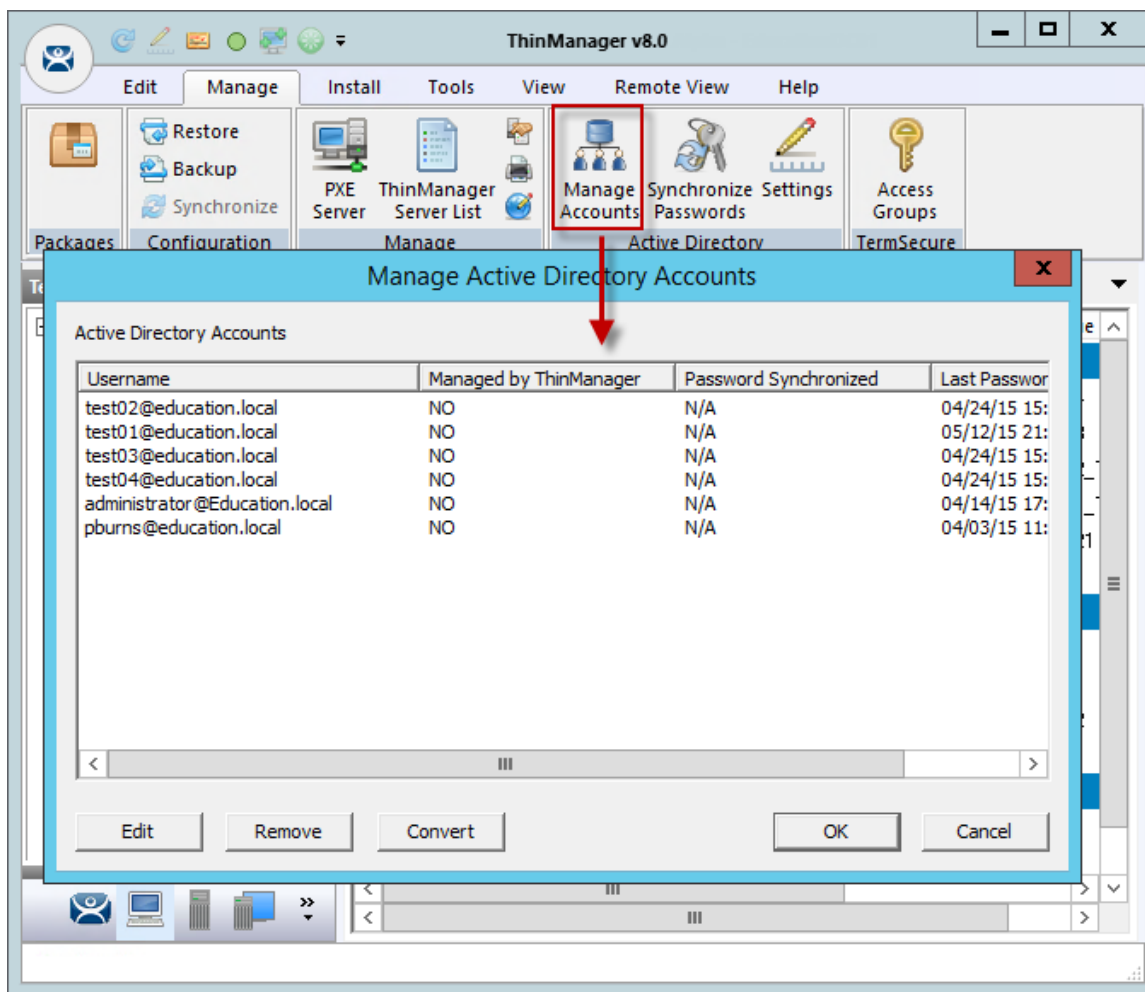
TermSecure User Group Created and Populated

Once ThinManager has imported the TermSecure Users the user count will increase and the expansion box will appear.

Password Management

ThinManager has tools to manage domain accounts and passwords.

The first tool is the **Manage Accounts** tool.

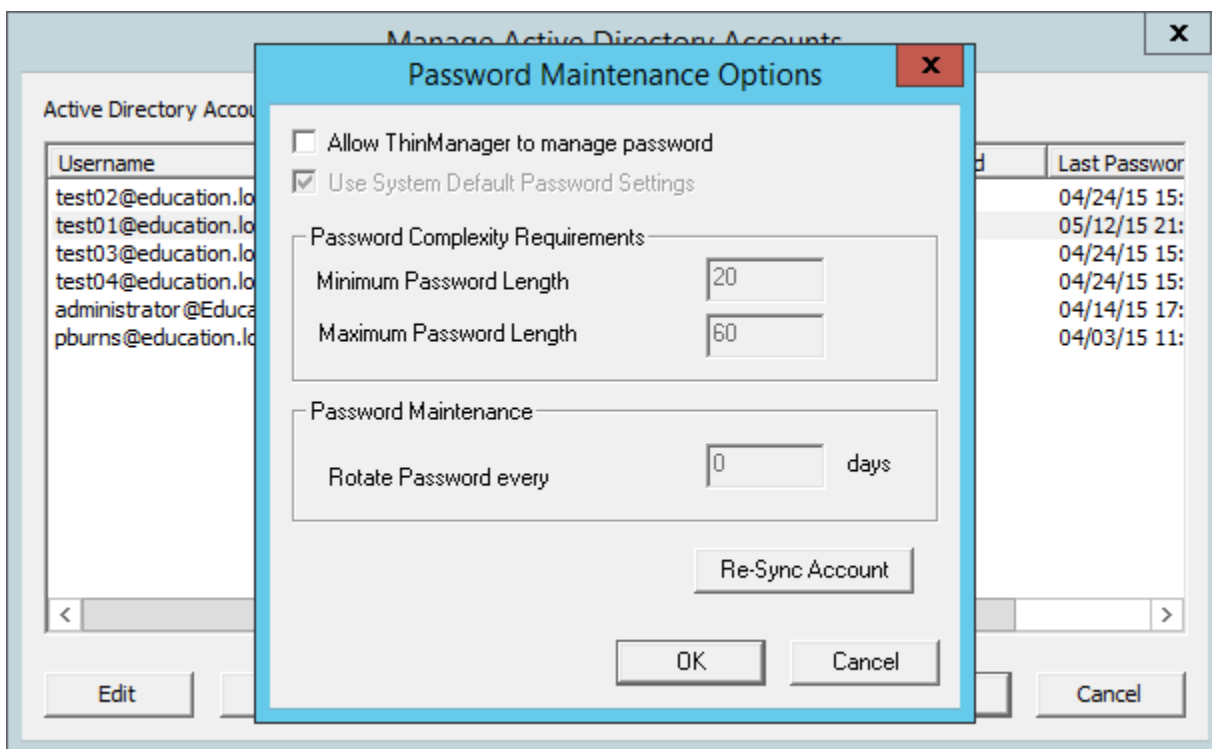


Manage Active Directory Accounts

Selecting **Manage > Manage Accounts** will launch the **Manage Active Directory Accounts** window. It lists all the AD user accounts that have been referenced in ThinManager.



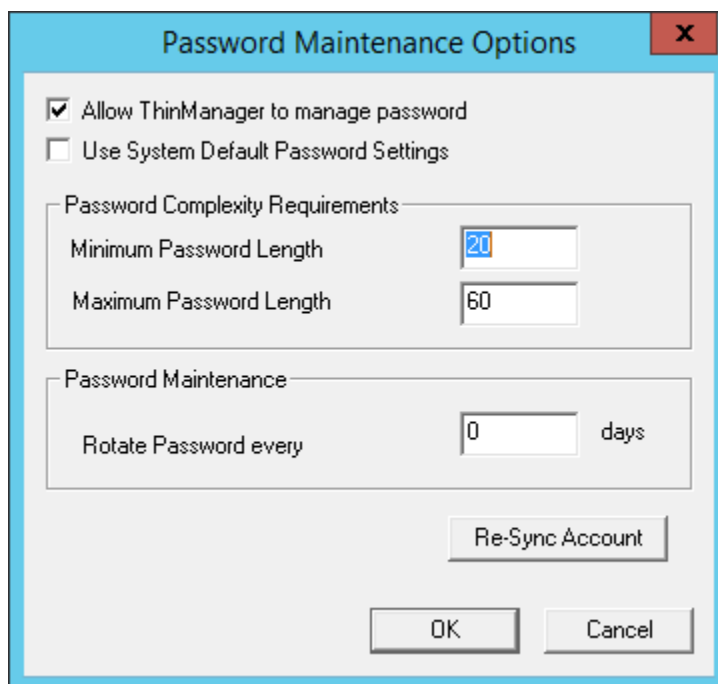
Double click on an account to launch the **Password Maintenance Options** window.



Password Maintenance Options Window

The **Password Maintenance Options** window allows you to have ThinManager manage the password for the account.

Check the **Allow ThinManager to manage password** checkbox to add this account to the list of managed accounts.



Password Maintenance Options



Once the **Allow ThinManager to manage password** checkbox is checked you can use the system defaults or uncheck the **Use System Default Password Settings** to customize the password settings.

The password settings include

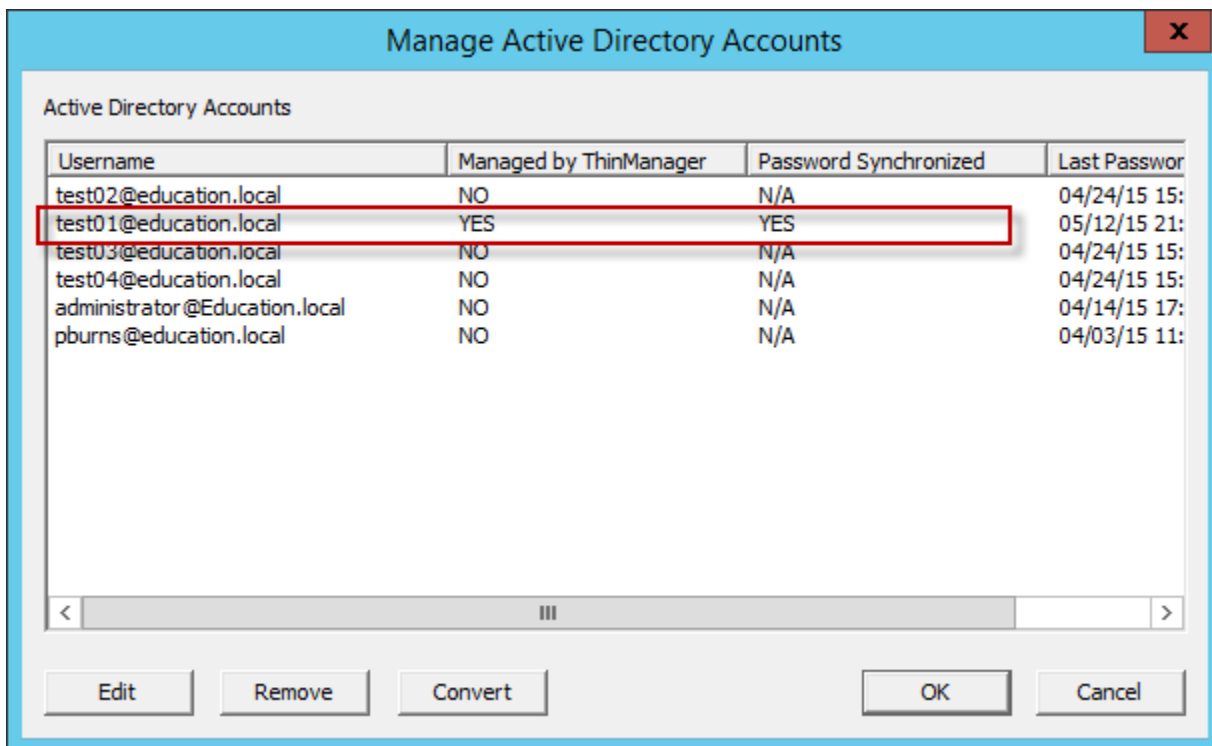
Password Complexity Requirements:

- **Minimum Password Length** – This is the minimum number of characters a password may have.
- **Maximum Password Length** – This is the maximum number of characters a password may have.

Password Maintenance:

- **Rotate Password every** – This is the number of days before the password must be changed.

Select the **OK** button to accept the changes or select the **Cancel** button to close the dialog without saving.



Manage Active Directory Accounts

Once the **Allow ThinManager to manage password** checkbox is checked then the account will be displayed as a managed account.

Summary

ThinManager 8 has Active Directory integration. It is not full active directory integration in the sense that there is still configuration for each user stored in the ThinManager database. However, you can reference Active Directory users for use with ThinManager Terminal user accounts, Location user accounts, and TermSecure User accounts.

The ThinManager database will automatically synchronize TermSecure Users with the AD users. Users added to AD will be added to the ThinManager tree, users deleted from AD will be removed from the ThinManager tree.