



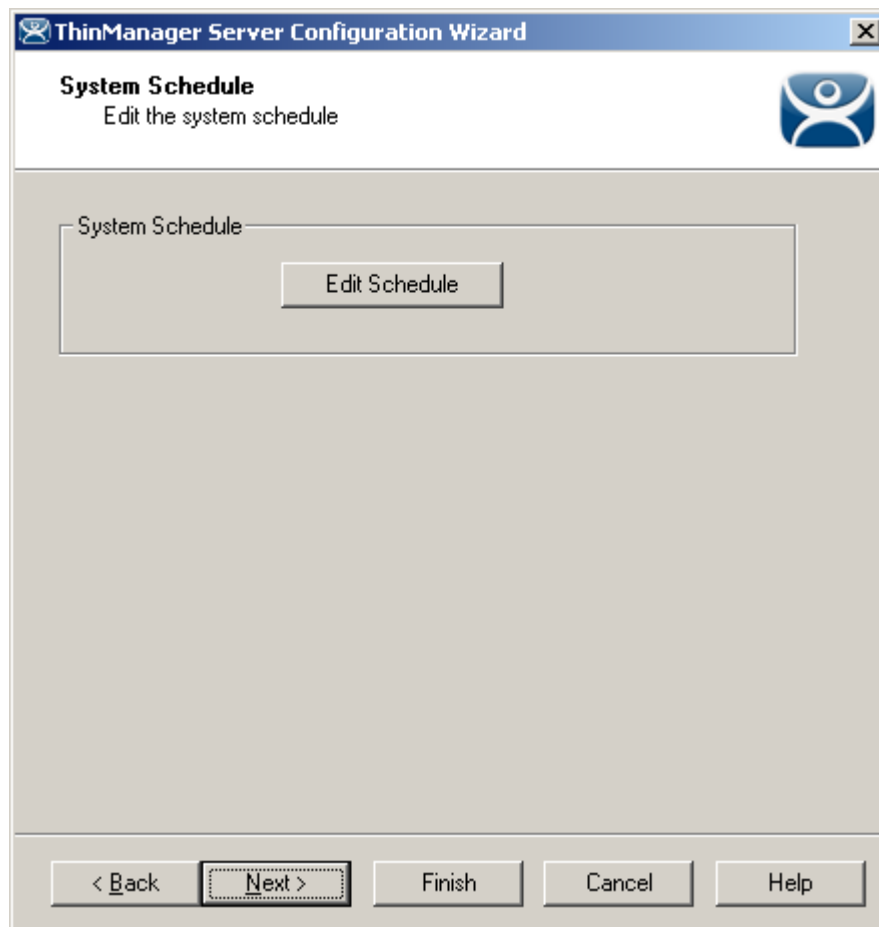
ThinManager Server Schedules

Use the **F1** button on any page of a ThinManager wizard to launch Help for that page.

Visit www.thinmanager.com/TechNotes4/01_Intro/Manuals.shtml to download the manual, manual chapters, or the abridged ThinManual.

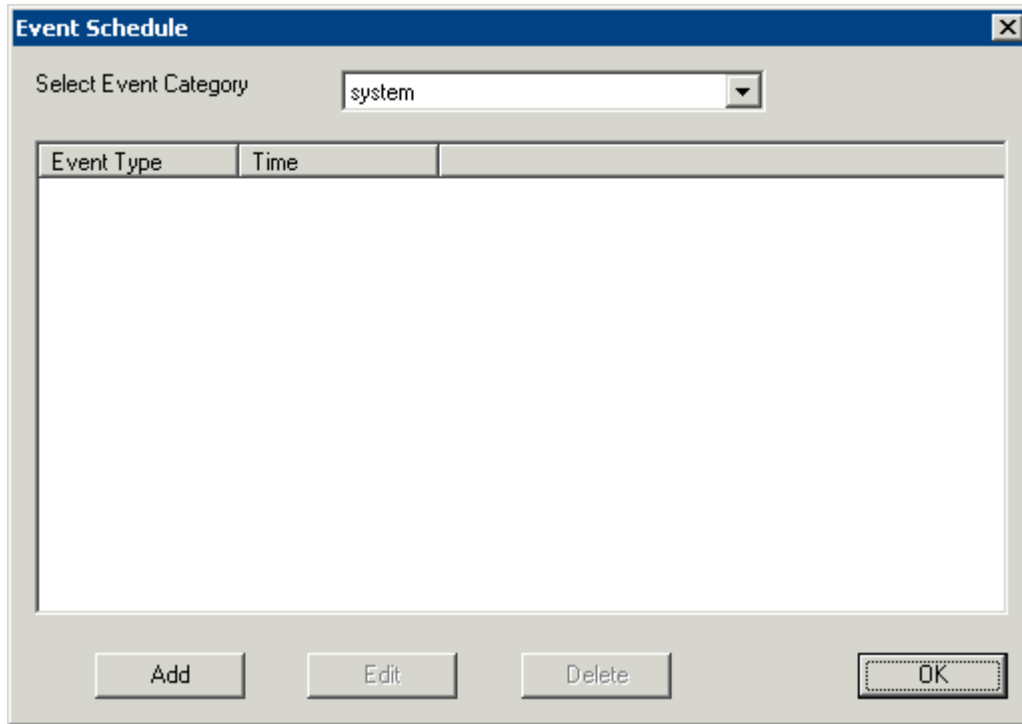
The **ThinManager Server Configuration Wizard** has a **System Schedule** page that allows the Scheduler to be launched. This allows tasks to be scheduled for the ThinManager Server.

System Schedule



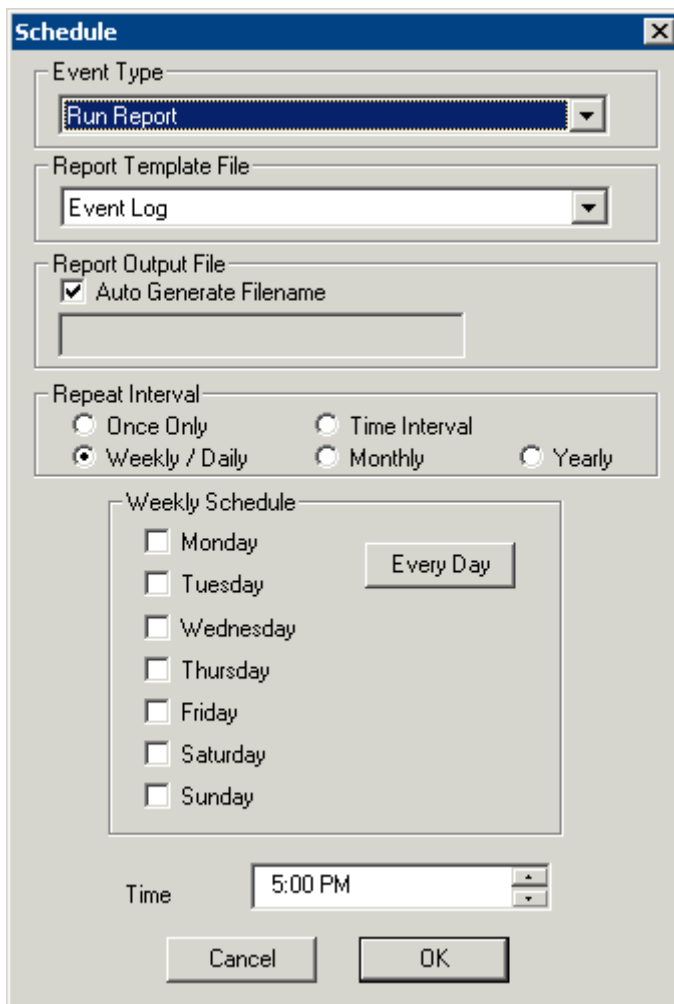
System Schedule

Select the **Edit Schedule** button to launch the **Event Schedule** window.



Event Schedule Window

The **Event Schedule** window allows events to be scheduled by selecting the **Add** button when **system** is displayed in the **Select Event Category** drop-down box.



Schedule for Weekly Event

The **Schedule** dialog allows events to be scheduled for the ThinManager. The two main events are **Run Report** and **Backup Configuration Database**.

Select the desired event in the **Event Type** drop-down.

If **Run Report** is chosen, select the desired report in the **Report Template File** drop-down.

If **Backup Configuration Database** is chosen the backup file will be automatically chosen if the **Auto Generate Filename** checkbox is selected. To use a different filename, uncheck the **Auto Generate Filename** checkbox and enter the desired name in the **Report Output Filename**. A **Browse** button will appear to allow selection of the file.

The **Repeat Interval** radio buttons control the frequency of the event. The time selection varies with the **Repeat Interval** chosen.

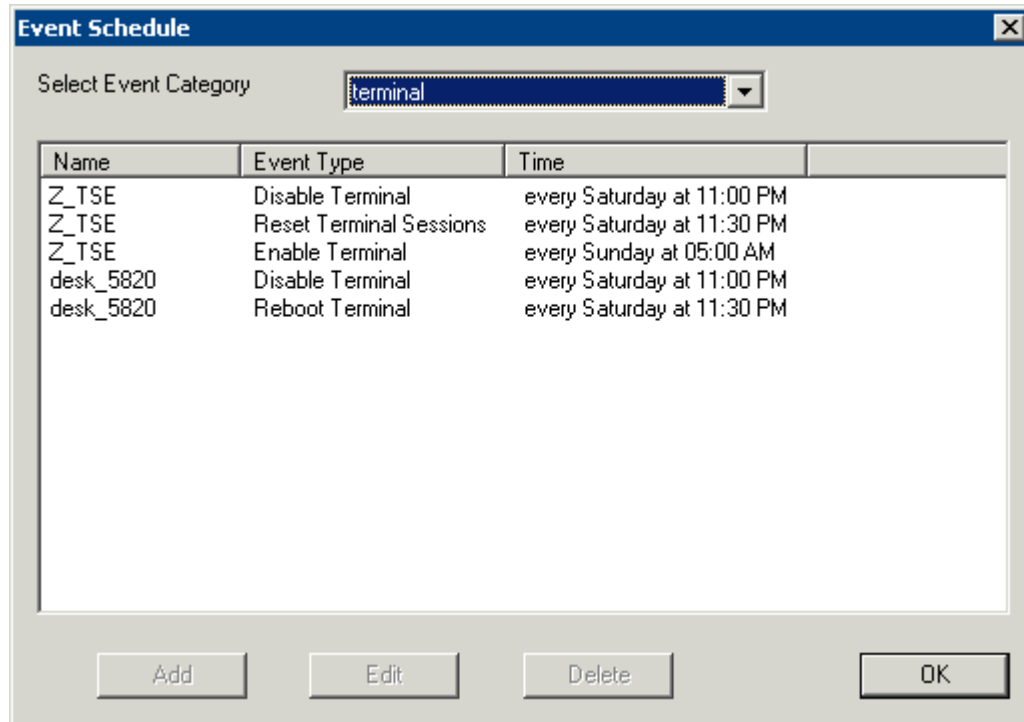
The screenshot shows a 'Schedule' dialog box with the following fields and controls:

- Event Type:** A dropdown menu set to 'Backup Configuration Database'.
- Backup File:** A checked checkbox for 'Auto Generate Filename', an empty text field, and a 'Browse' button.
- Repeat Interval:** Radio buttons for 'Once Only', 'Weekly / Daily', 'Time Interval', 'Monthly' (which is selected), and 'Yearly'.
- Select Day of Month:** A text field containing '15' with up and down arrow buttons.
- Time:** A time selection field set to '8:00 PM' with up and down arrow buttons.
- Buttons:** 'Cancel' and 'OK' buttons at the bottom.

Schedule for Monthly Event

Select the appropriate time for the event and select **OK** to accept the configuration and **Cancel** to cancel the changes.

While the **Event Schedule** window is open, other scheduled events can be viewed by selecting the event type in the **Select Events Category** drop-down. The event categories are **system** (ThinManager Server), **terminal** (Terminals), **terminalserver** (Terminal Servers) and **user** (TermSecure Users).



Events Schedule

New events cannot be added for the non-system categories, but existing events can be changed by highlighting an event and selecting the **Edit** button. Events can be deleted by selecting the **Delete** button. The **OK** button accepts the changes and closes the window.