



## TermSecure User Schedules

Use the **F1** button on any page of a ThinManager wizard to launch Help for that page.

Visit [www.thinmanager.com/TechNotes4/01\\_Intro/Manuals.shtml](http://www.thinmanager.com/TechNotes4/01_Intro/Manuals.shtml) to download the manual, manual chapters, or the abridged ThinManual.

TermSecure Users and TermSecure User Groups have a schedule on the **User Options** page of the TermSecure User Configuration Wizard.

**TermSecure User Configuration Wizard**

**User Options**  
Select options for this user.

**Log In / Log Out Options**

Inactivity Timeout: 120 seconds  
Reset Sessions at Logout:   
Activate User Group at Log In:

**User Schedule**

Set Schedule

**Terminal Effects**

Enable Terminal Effects

**Shadowing**

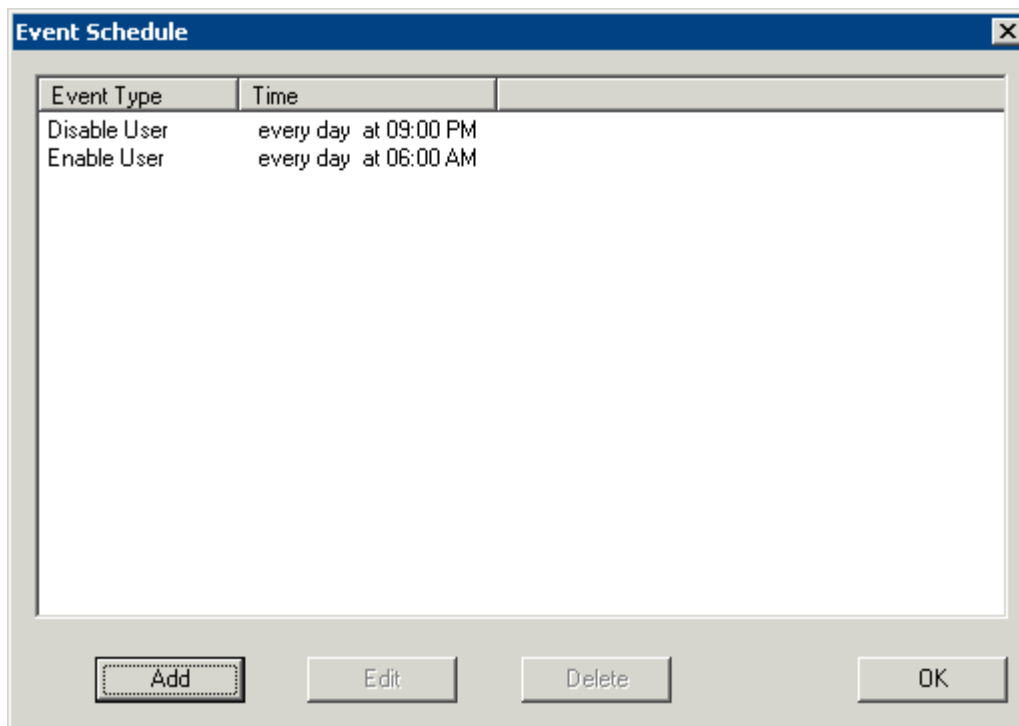
Allow terminal to be shadowed: YES  
 Allow Interactive Shadow

< Back   Next >   Finish   Cancel   Help

*TermSecure User Terminal Configuration Wizard – User Options Page*

Check the **Set Schedule** checkbox and select the **Schedule** button to launch the **Event Schedule** window.

**Note:** The Schedule for TermSecure User Groups is the same as for individual TermSecure Users. It has an advantage of applying the scheduled events to a whole group of users instead of requiring a configuration for each event on each user.



*Event Schedule*

The Event Schedule will list events for the TermSecure User or TermSecure User group. It has four buttons:

- The **Add** button will launch a **Schedule** window to allow an event to be configured.
- The **Edit** button will allow a highlighted event to be changed.
- The **Delete** button will remove a highlighted event.
- The **OK** button will accept changes and close the **Event Schedule** window.

Events can be added by selecting the **Add** button to launch the **Schedule** window.



The screenshot shows a 'Schedule' dialog box with the following settings:

- Event Type:** Disable User
- Repeat Interval:** Weekly / Daily (selected), Once Only, Time Interval, Monthly, Yearly
- Weekly Schedule:** Every Day (selected), Monday, Tuesday, Wednesday, Thursday, Friday, Saturday, Sunday
- Time:** 7:00 PM

Schedule Window

The **Schedule** window has several configuration settings.

**Event Type** is a drop-down box that allows event selection:

- **Disable User** - This will prevent a user from logging in through TermSecure or will disconnect and existing session.
- **Enable User** - This will allow a user to become active again.

The **Repeat Interval** radio buttons allow the event in the **Event Type** drop-down to be run **Once Only**, **Weekly/Daily**, **Monthly**, or **Yearly**.

- Selecting **Once Only** will show a **Select Date** field for the event.
- Selecting **Weekly/Daily** will show a **Weekly Schedule** list for the event to run. The **Every Day** button will select all the days in the list.
- Selecting **Monthly** will show a **Select Day of Month** field for the event.
- Selecting **Yearly** will show a **Select Date** field for the event.

The **Time** field allows the selection of the time that the event should occur.

Select the **OK** button to close the **Schedule** window.

Select **Add** to add another event to the **Event Schedule** or select **OK** to close the **Event Schedule** window and return to the terminal configuration.