



Shadowing

Use the **F1** button on any page of a ThinManager wizard to launch Help for that page.

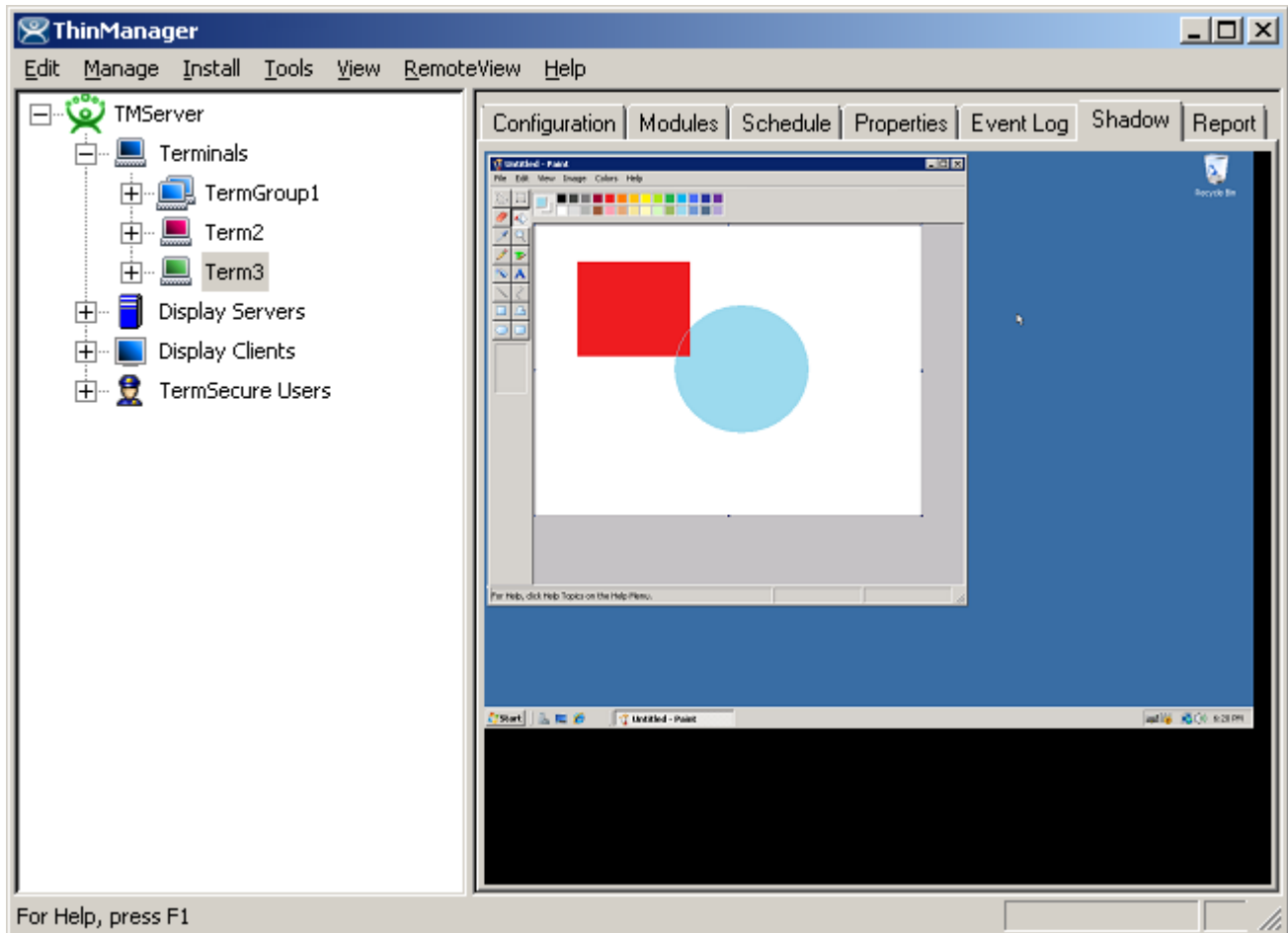
Visit www.thinmanager.com/TechNotes4/01_Intro/Manuals.shtml to download the manual, manual chapters, or the abridged ThinManual.

Shadowing is a popular management tool that allows an authorized user to view what is running on a remote client. There are two methods:

- ThinManager Shadow – This discussed here.
- Terminal-to-Terminal Shadow – This is discussed at www.thinmanager.com/TechNotes4/07_Features/Terminal2TerminalShadow.pdf.

ThinManager Shadow

Shadowing of a ThinManager Ready terminal can be initiated from within ThinManager by using the **Shadow** tab in the Detail pane of ThinManager. To shadow, **highlight the desired terminal** in the ThinManager tree and select the **Shadow** tab.



Shadow – Shadow Scaled to Window



The shadowed terminal can be viewed full-sized or scaled to fit in the Details pane. Select **RemoteView > Shadow scaled to Window** to scale the session and unselect the option to view it life sized.

Shadow Access

Access to the shadow function is controlled by membership in ThinManager User Groups. By default only administrators are allowed to shadow.

Shadowing privileges can be established through the use of ThinManager Security Groups. By default the following permissions are granted:

- **ThinManager Administrators** and **Administrators** can shadow terminals and interactively control the terminal session.
- **ThinManager Power Users** can shadow terminals from within ThinManager but cannot interact with the session. They are in View-only mode.
- **ThinManager Interactive Shadow Users** can shadow terminals from within ThinManager and can interact with the session.
- **ThinManager Shadow Users** can shadow terminals from within ThinManager but cannot interact with the session. They are in View-only mode.
- **ThinManager Users** cannot shadow a terminal.

RemoteView > Interactive Shadow on the menu bar prevents the interaction with the shadowed session if unselected.

RemoteView > Scaled to Window on the menu bar, if selected, will display the entire session in the Shadow tab. If unselected, it will display the session at normal size with scroll bars, if needed.



Configure Shadowing

Shadowing can be configured on the **Terminal Options** page of the **Terminal Configuration Wizard** or **Terminal Group Configuration Wizard**.

Terminal Configuration Wizard

Terminal Options
Select the options for this terminal.

Terminal Replacement

Allow replacement at terminal if off line

Terminal Schedule

Set Schedule Schedule

Terminal Effects

Enable Terminal Effects
 Show terminal status messages

Shadowing

Allow terminal to be shadowed YES

Allow Interactive Shadow

< Back Next > Finish Cancel Help

Terminal Configuration Wizard - Shadow Configuration

The **Allow terminal to be shadowed** drop-down box allows the configuration of Shadowing Options.

- **No** - Prevents members of the Group from being shadowed.
- **Ask** - Will display a message window that will prompt for a positive response before the shadowing is allowed.
- **Warn** - Will display a message window alerting the terminal that it is to be shadowed, but doesn't require a positive response before the shadowing is allowed.
- **Yes** - Allows shadowing to occur without warning or recipient input.

Allow Interactive Shadow will allow members with Interactive Shadow privileges to shadow the terminal. The Interactive Shadow privileges are configured in the ThinManager Server Configuration Wizard.

Shadowing is initiated from the Shadow tab on the **Details** pane of the ThinManager program. Unselecting the **Allow Interactive Shadow** checkbox will prevent shadowing from within ThinManager.



Shadow Keystrokes

Because the **CTL+ALT+DEL** and the **CTL+ESC** keystrokes can't be sent to the local machine to the shadowed ThinManager Ready thin client, there is a menu item to send these commands. Select **RemoteView > Send Key > *Send Ctl+Alt+Del* or **RemoteView > Send Key > *Send Ctl+Esc* to send these commands.****

Note: The Key Block Module will block these commands from being sent to a shadowed session.

Changing the tab or selecting another tree icon will break the shadow connection.