

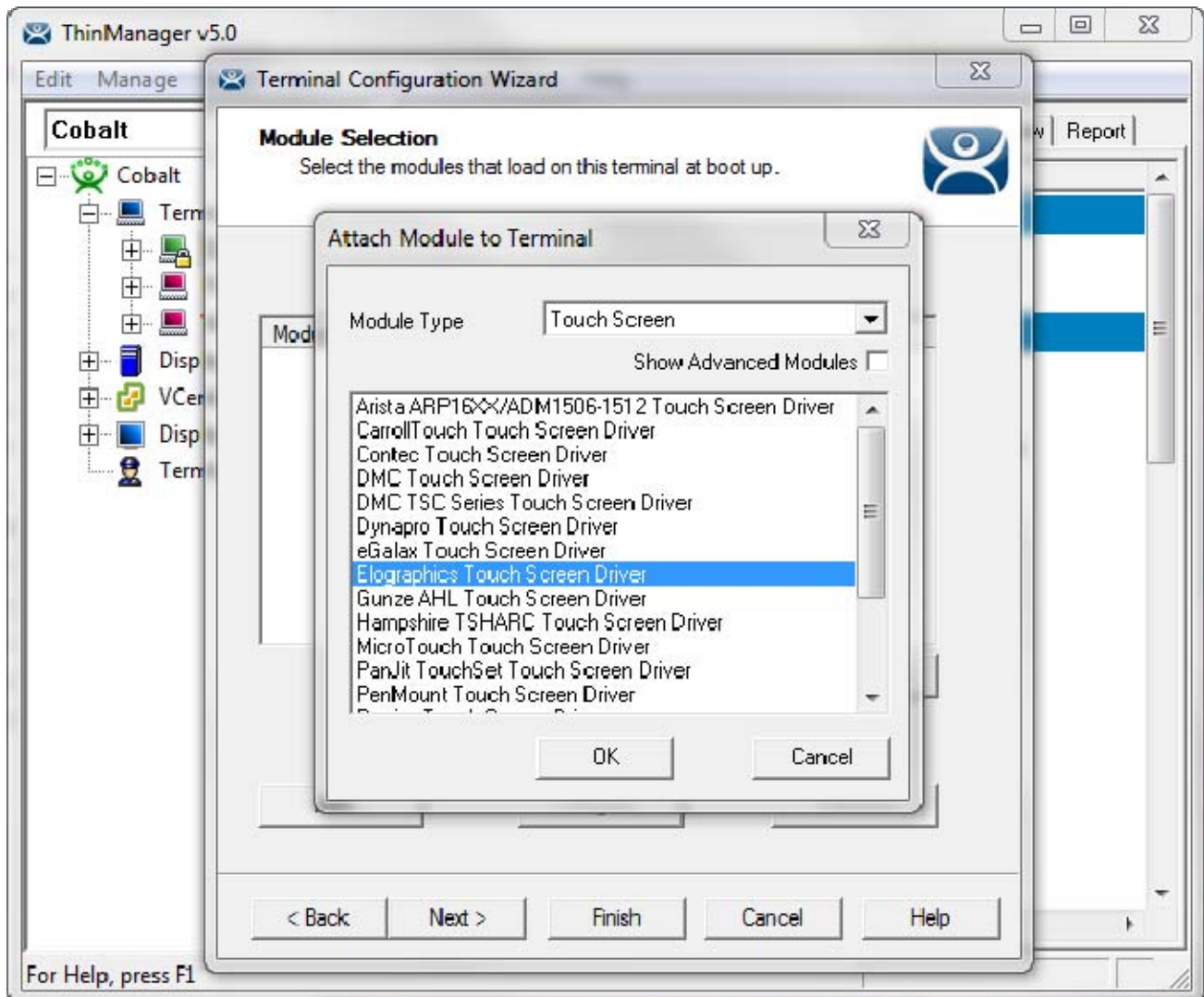
Touch Screens

Use the **F1** button on any page of a ThinManager wizard to launch Help for that page.

Visit www.thinmanager.com/technotes/ to download the manual, manual chapters, or the ThinManual.

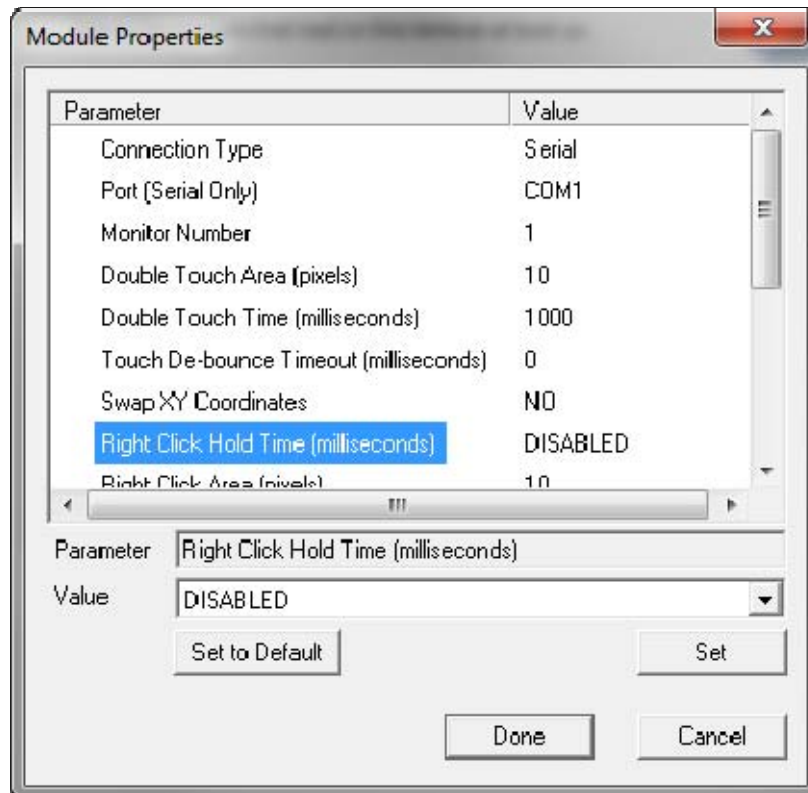
ThinManager supports a large number of touch screens. They are easily added on the Module page of the Terminal Configuration Wizard.

Configuration in ThinManager



Attach Module to Terminal Window and the Module Selection Page

Once the proper touch screen module is added you can configure the parameters of the touch screen.



Module Properties Page

The configurable parameters include the Monitor Number for MultiMonitor thin clients, Right Click Hold Time to give the touch screen the right click function, and/or the Calibration Hot Key, and Calibration Hotkey assignment, among others.

Touch Screen Controller

The module needs to match the make of the touch screen controller, not the brand name of the monitor. The make of the monitor is incidental.

USB Touch Screens

Touch screen monitors that use USB to connect to the terminal should use the USB Touch Driver

Touch Screen Modules

These are the current modules for serial touch screen controllers:

Arista ARP-16XXXAP-ACP Touch Screen Driver

CarrollTouch Touch Screen Driver

Contec Touch Screen Driver

DMC TSC Series Touch Screen Driver

DMC Touch Screen Driver

Dynapro Touch Screen Driver

eGalax Touch Screen Driver

Elographics Touch Screen Driver

Gunze AHL Touch Screen Driver

Hampshire TSHARC Touch Screen Driver

MicroTouch Touch Screen Driver

Panjit TouchSet Touch Screen Driver

PenMount Touch Screen Driver

Ronics Touch Screen Driver

Touch Control Touch Screen Driver

Touch International IR Touch Screen Driver

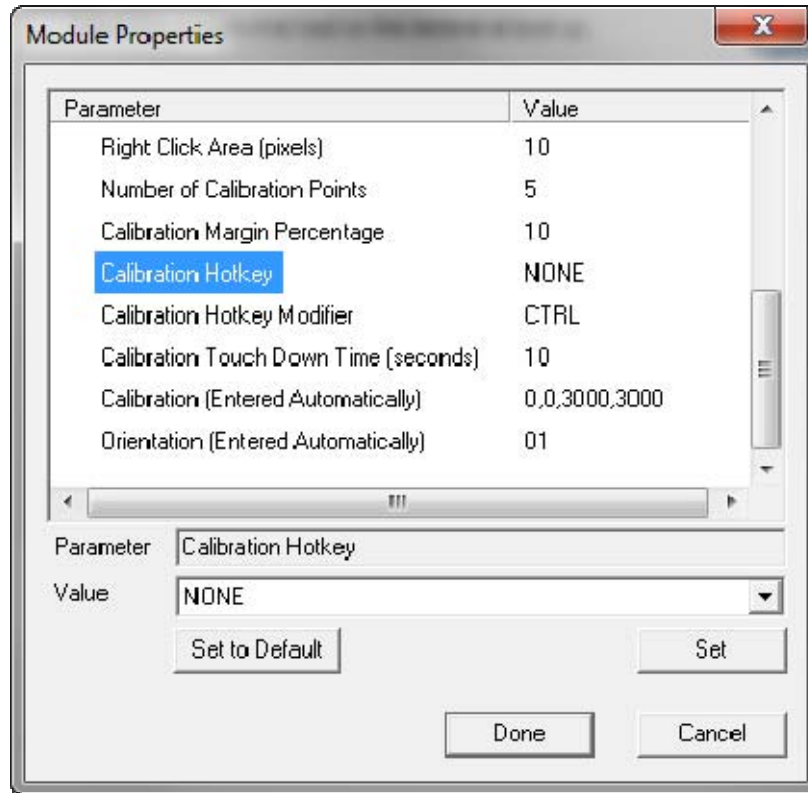
Xycom 33XX Touch Screen Driver

Zytronic Touch Screen Driver



Calibration

The calibration program can be initiated on the terminal by highlighting the terminal in the ThinManager tree and selecting *Tools> Calibrate Touch Screen* on the ThinManager menu.



Calibration Tools in the Module Property Window

The Touch Screen Module can be configured so that holding a touch for a number of seconds will initiate the calibration program. Use the Calibration Touch Down Time (seconds) parameter.

The touch calibration can be initiated with a hot key if the Calibration Hotkey parameter is configured in the module.

The Calibration program can be run from the Start menu of a desktop by selecting *Start > All Programs > ACP > CalTouchScreen*.

The TermMon ActiveX control can be configured to initiate the calibration program from within an application.

Note: Allen-Bradley touch screens use the PenMount touch screen controller in early models but are changed to the PanJit touch controller in later versions of the same series. If a new monitor doesn't behave properly with the PenMount driver try using the PanJit driver.