



## AppLink

Use the **F1** button on any page of a ThinManager wizard to launch Help for that page.

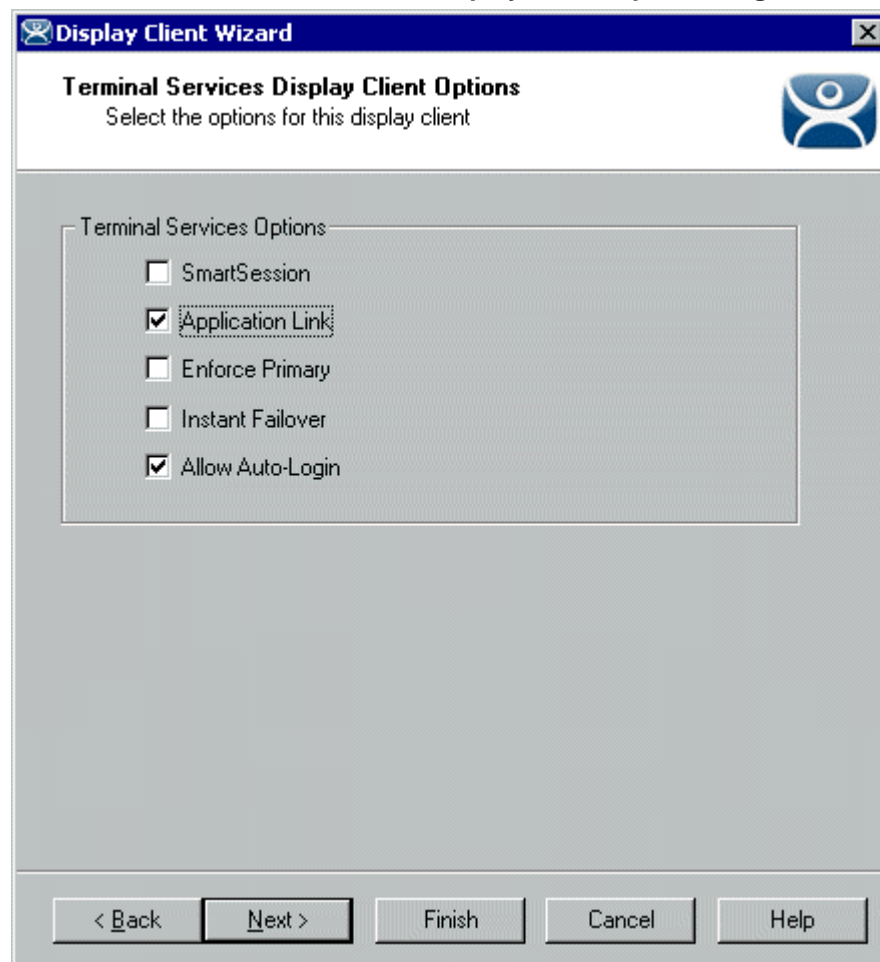
Visit [www.thinmanager.com/TechNotes4/01\\_Intro/Manuals.shtml](http://www.thinmanager.com/TechNotes4/01_Intro/Manuals.shtml) to download the manual, manual chapters, or the abridged ThinManual.

ThinManager can control access to applications with the **AppLink** feature of Terminal Server Display Clients. This deploys a single application per session without a desktop, start button, or icons that would let the user launch undesired programs. AppLink is configured by default to keep the application running; if they close it, the application will re-open.

AppLink is configured on the **Terminal Server Display Client Wizard**.

- Create a new display client by right clicking on the Terminal Services branch of Display Clients in the ThinManager tree and selecting **Add Display Client**.
- Open an existing Terminal Server Display Client by double clicking on it in the ThinManager tree.

Navigate through the wizard to the **Terminal Server Display Client Options Page**.



*Display client Wizard – Terminal Services Display Client Options*

Select the **Application Link** checkbox. Other options can be selected in combination with AppLink.



Select the **Next** button to continue to the AppLink page of the **Display Client Wizard**.

*Display client Wizard – AppLink*

Enter the path to the program you want to run in the **Program Path and Filename** field. This may require the use of quotation marks if there are spaces in the path name.

The **Command Line Options** field provides a space for command line options and switches. This field may not be required.

The **Start in the following folder** field is provided in case you need to specify the working directory for the program when using a relative path for the initial program. This field may not be required.

The **Browse** button will launch a Browse window that will allow the **Program Path and Filename** field to be filled in by ThinManager instead of typing the path manually.

---

**Note:** The AppLink Display Client may contain a single terminal server or may contain many terminal servers. If a Terminal Services Display Client contains several terminal servers, the path must be valid on all terminal servers. If different terminal servers have different paths to the desired program, write a batch file to open the program.

---