

Automatic Synchronization of a ThinManager Server Configuration

Use the **F1** button on any page of a ThinManager wizard to launch Help for that page.

Visit www.thinmanager.com/technotes/ to download the manual, manual chapters, or the ThinManual.

Automatic Synchronization

Multiple ThinManager Servers should be synchronized so that a terminal will receive the same configuration regardless of the ThinManager Server that it boots from. Automatic synchronization makes it easier to keep the configuration on the two ThinManager Servers the same. Changing a configuration on one will make the change on the other.

Automatic Synchronization has a few things to consider:

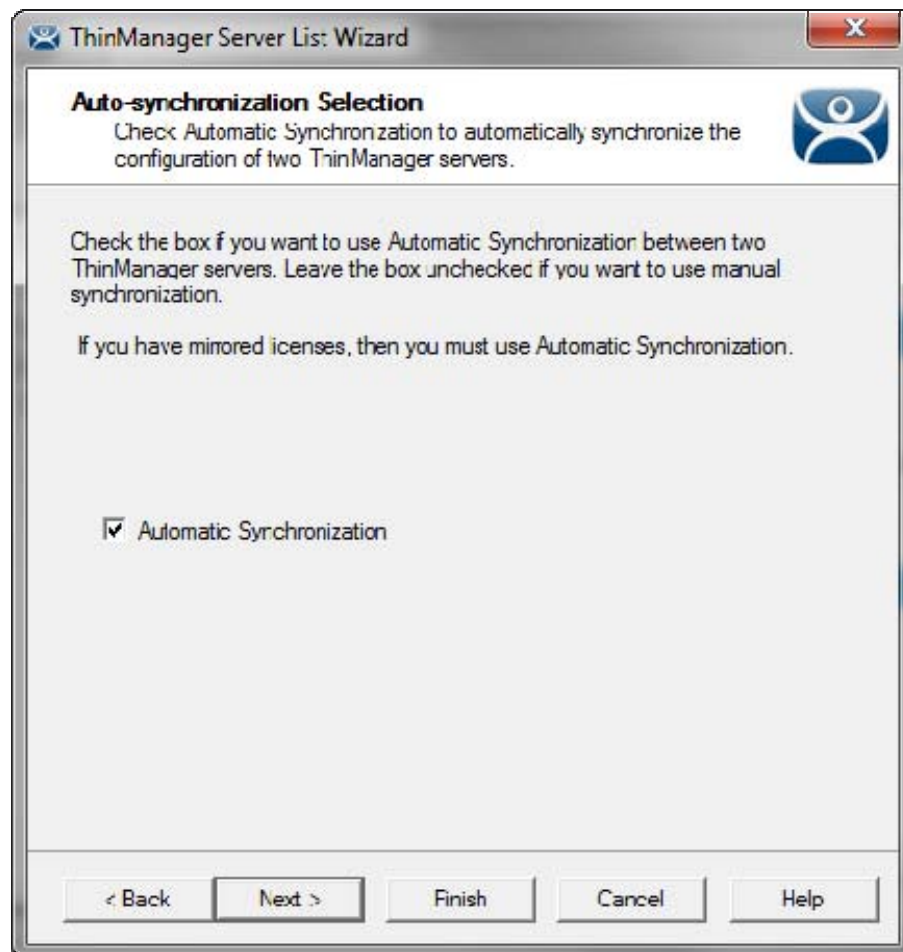
- It is a good idea to backup the configuration before making changes because a mistake on one ThinManager Server will pass the mistake to the other ThinManager Server. The backup will allow a chance to restore the configuration to a pre-mistake state.
Select *Manage > Backup Configuration* from the ThinManager menu bar to backup the configuration.
- ThinManager has a scheduling function that can be set to automatically back up the configuration.
- Automatic synchronization is required for Mirrored Redundancy.
- Automatic synchronization will configure each thin client to send the green/red status lights to both ThinManager Servers so the ThinManager Server Monitor List page isn't shown in the Terminal Configuration Wizard, as it isn't needed.

Note: Automatic synchronization is required for Mirrored licenses, Redundant licenses, and Enterprise Server licenses



Automatic synchronization is configured in the ThinManager Server List Wizard. Launch it by selecting *Manage > ThinManager Server List* ThinManager menu.

Proceed the Auto-synchronization Selection page.



Auto-synchronization Selection Page

Select the *Automatic Synchronization* checkbox and select the *Next* button to configure Auto-synchronization.



Automatic Synchronization Configuration

The image shows a Windows-style dialog box titled "ThinManager Server List: Wizard". The main heading is "Auto-synchronization Configuration" with a sub-instruction: "Define the primary and secondary ThinManager servers. These servers will be synchronized." Below this, there are two sections for server configuration. The "Primary ThinManager Server" section has an "Edit" button and two input fields for "Name" and "IP Address". The "Secondary ThinManager Server" section also has an "Edit" button and two input fields for "Name" and "IP Address". At the bottom of the dialog are five buttons: "< Back", "Next >", "Finish", "Cancel", and "Help".

Auto-synchronization Configuration

Select each *Edit* button on the Auto-synchronization Configuration page to launch the *Enter ThinManager Server Information Window* for each ThinManager Server.

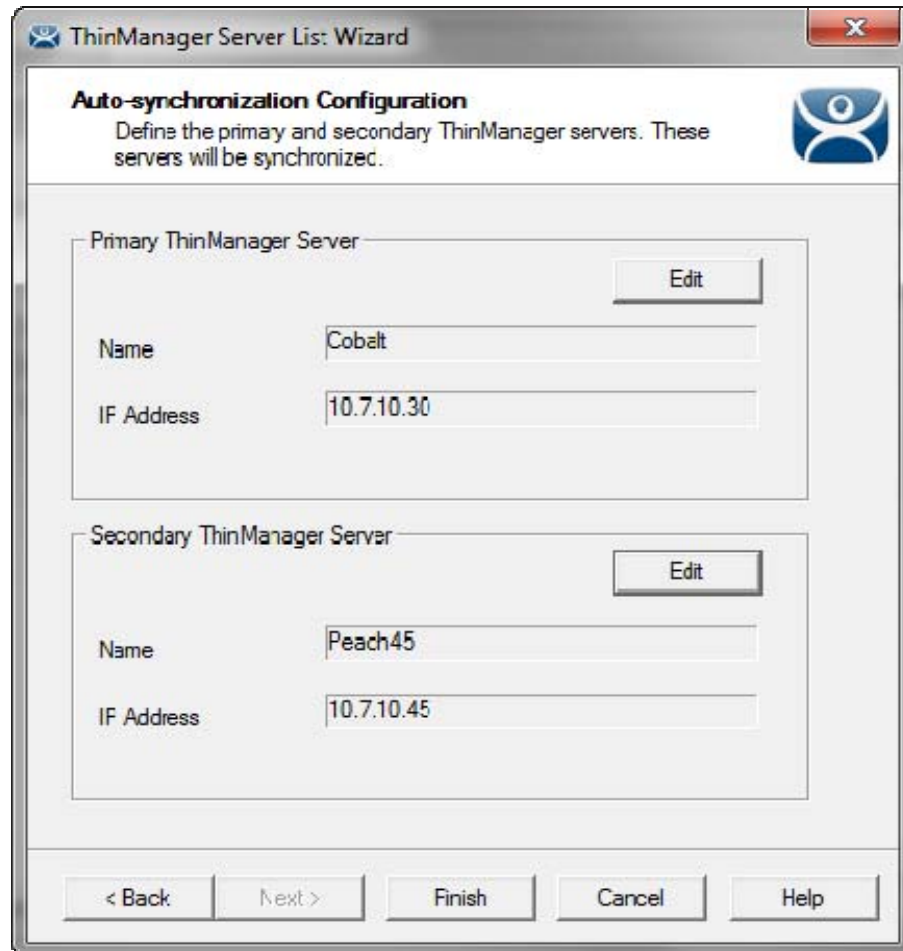
The image shows a smaller dialog box titled "Enter the Primary ThinManager Server Information". It contains two input fields: "ThinManager Server" with the text "Cobalt" and "ThinManager Server IP" with the text "10 . 7 . 10 . 30". To the right of these fields are "OK" and "Cancel" buttons. Below the input fields is a "Discover" button.

Enter ThinManager Server Information Window

Enter the name of the ThinManager Server in the *ThinManager Server* field.

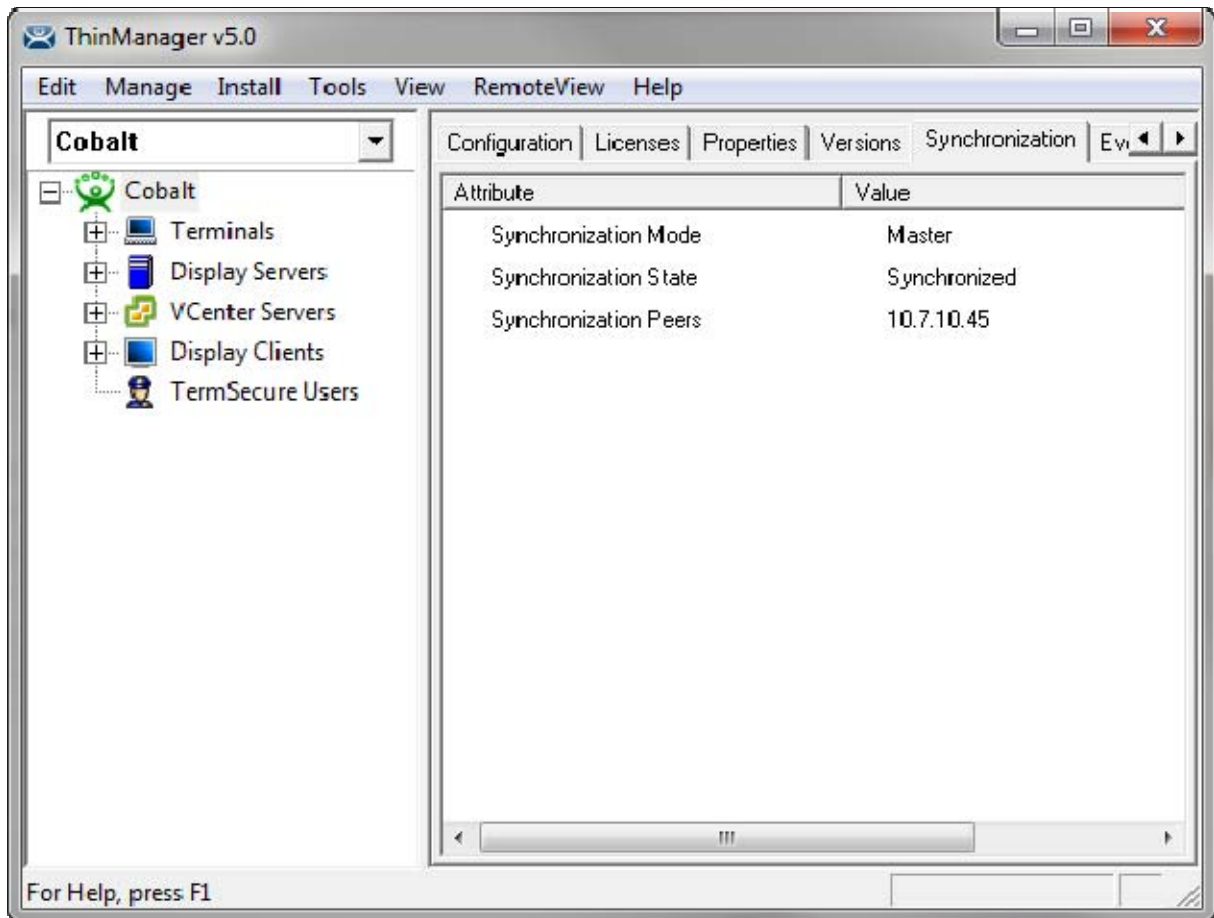
Enter the IP address of the ThinManager Server. The *Discover* button will enter the IP address for you.

Select the *OK* button to accept the settings or the **Cancel** button to close without saving.



Synchronized Pair of ThinManager Servers

Select *Finish* to accept the changes and close the ThinManager Server List wizard. The two ThinManagers will now be synchronized.



Synchronization Tab

The synchronization status can be checked on the **Synchronization** tab of ThinManager.