

## Installing Firmware

Use the **F1** button on any page of a ThinManager wizard to launch Help for that page.

Visit [www.thinmanager.com/technotes/](http://www.thinmanager.com/technotes/) to download the manual, manual chapters, or the ThinManual.

Firmware is the operating system for ThinManager Ready thin clients. Each time a ThinManager Ready thin client boots it connects to a ThinManager Server, downloads the firmware, and then expands it into RAM for use as an operating system.

Firmware is installed with ThinManager and with each service pack. Occasionally new firmware is released to provide support for new devices or functions.

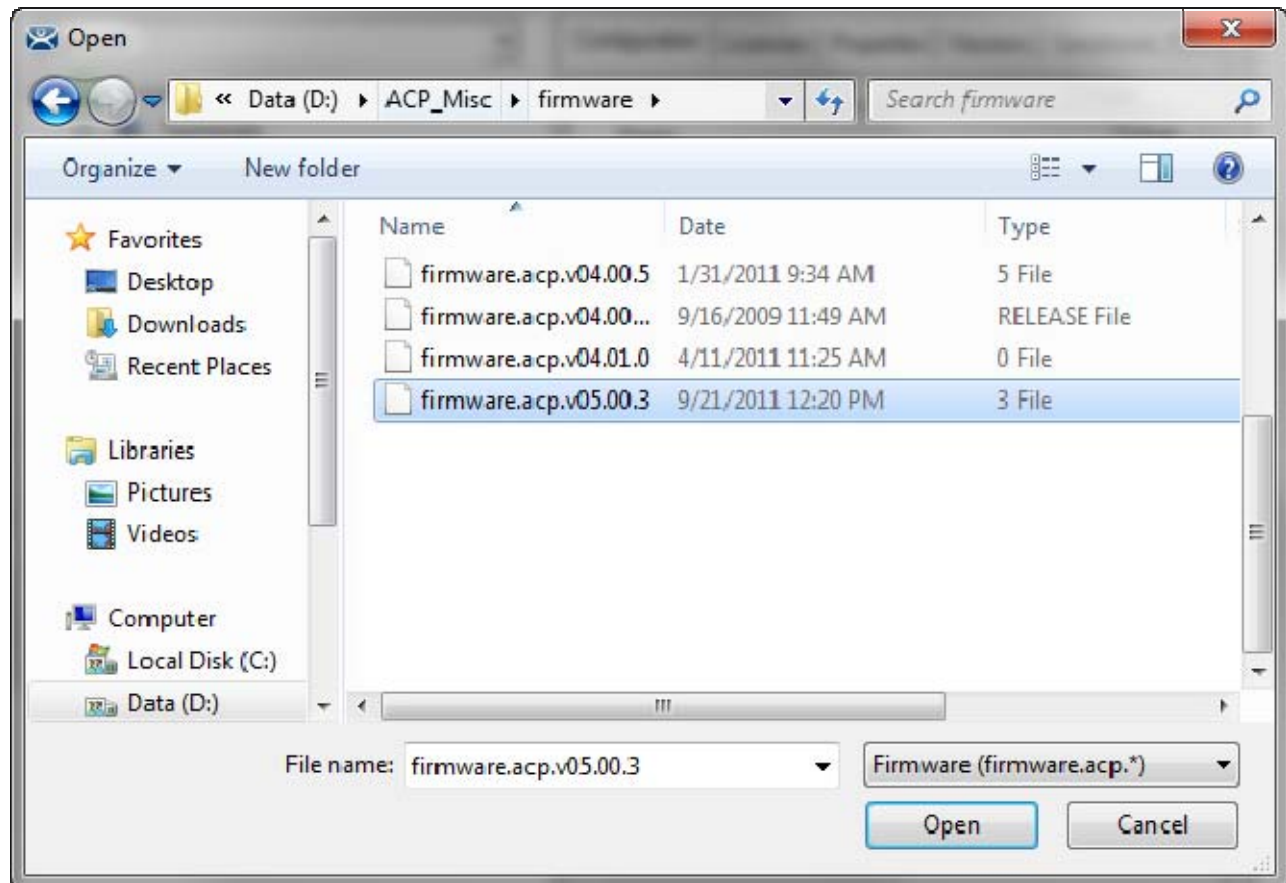
### Downloading New Firmware

The ThinManager download site has firmware at <http://www.thinmanager.com/support/downloads.php>.

Once it is downloaded it needs to be applied to the ThinManager Server.

### Installing New Firmware

Select **Install>Firmware** from the ThinManager menu in ThinManager to launch a file browser.



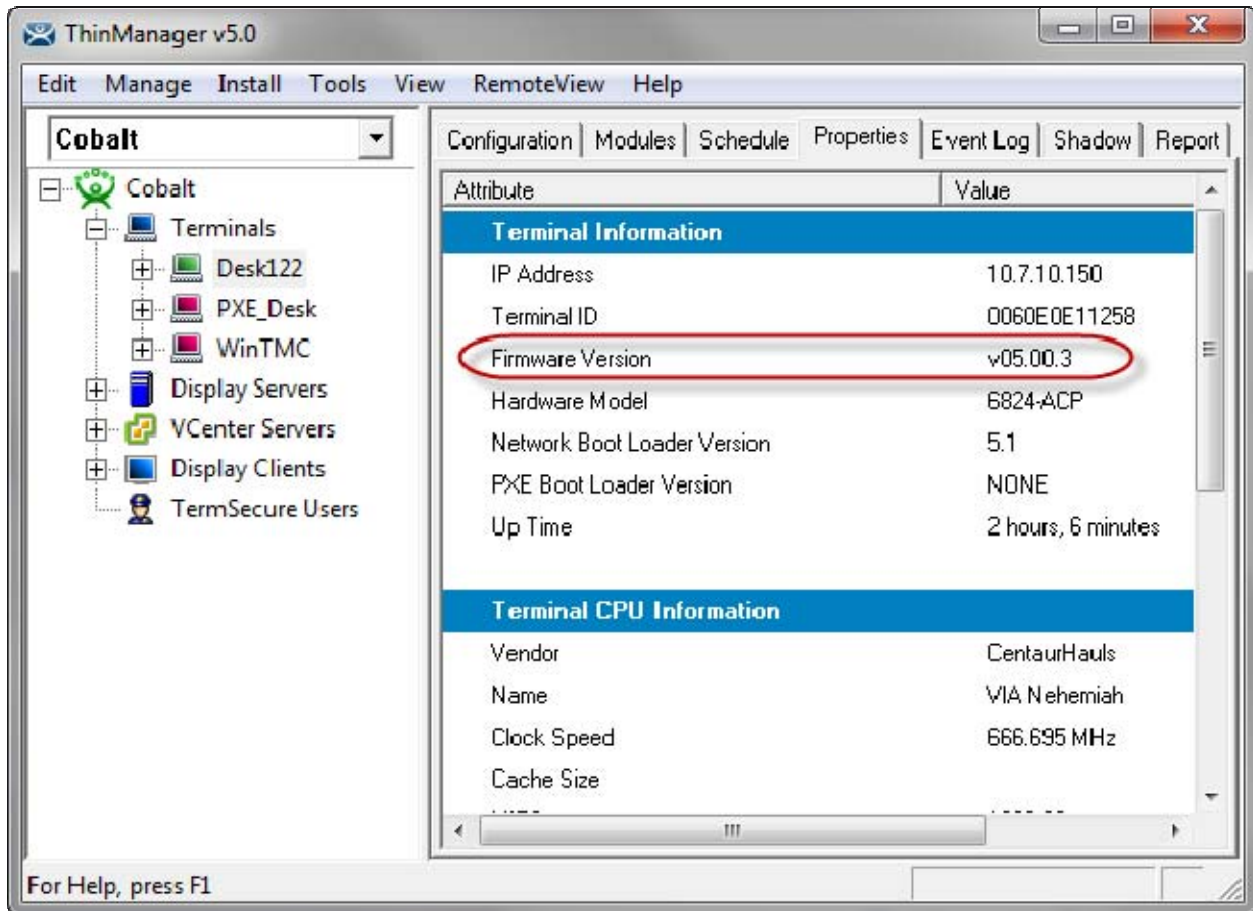
*Install New Firmware*

Select the new version of the **firmware.acp** and select **Open**. This will install the new version of the firmware onto the ThinManager Server.



Once the new firmware is loaded, the ThinManager Ready thin clients will load the new firmware whenever they are rebooted.

The **Properties** tab shows what firmware is being used by each thin client.



*Install New Firmware*

Highlight the desired terminal and select the Properties tab. It will list the current firmware among the terminal properties.