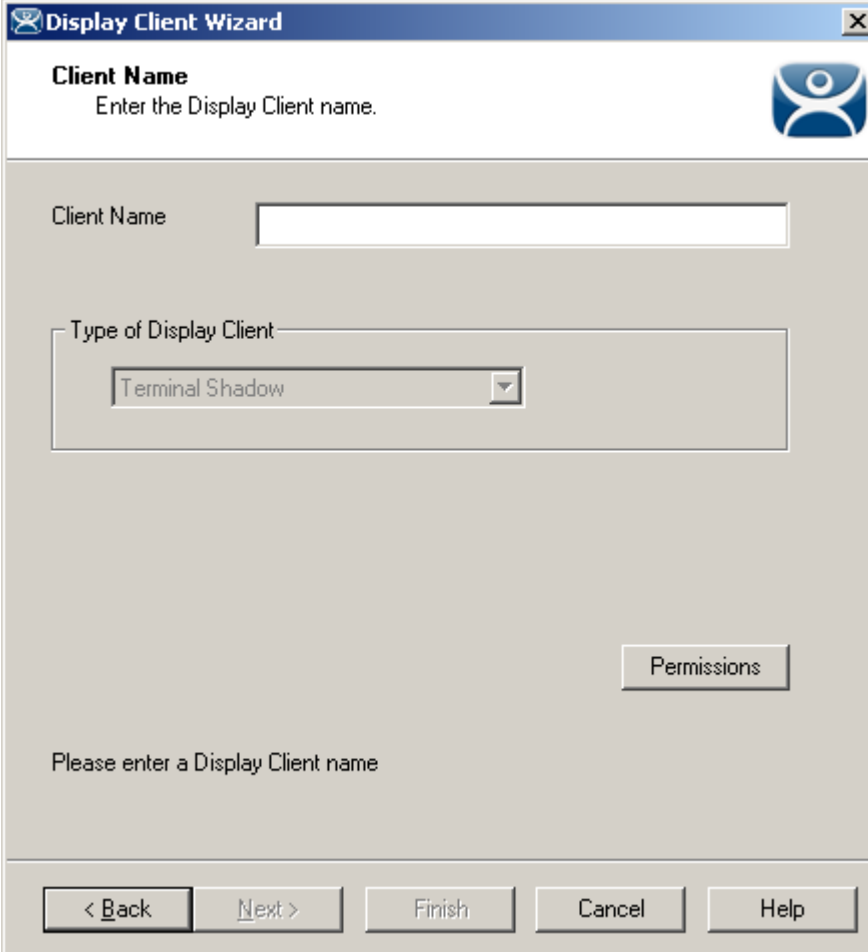


---

## Terminal Shadow Display Clients

Terminal Shadow Display Clients allow a terminal to shadow another terminal. The Shadow Display Client can contain a specific terminal or several terminals.

### *Group Name Page*



**Client Name**  
Enter the Display Client name.

Client Name

Type of Display Client  
Terminal Shadow

Permissions

Please enter a Display Client name

< Back   Next >   Finish   Cancel   Help

*Terminal Shadow Display Client - Group Name Page*

**Importance of Page:** This page starts the configuration wizard, sets the name, and the type of Display Client.

**Fields:**

- **Group Name** – This field is used to name the Display Client.

**Settings:**

- **Type of Display Client** drop-down box selects the function of the Display Client.
  - **Terminal Services** – This creates an Display Client that allows a terminal to connect to a terminal server, login, and run a session.
  - **Terminal Shadow** – creates an Display Client that allows a terminal to be shadowed by another terminal.

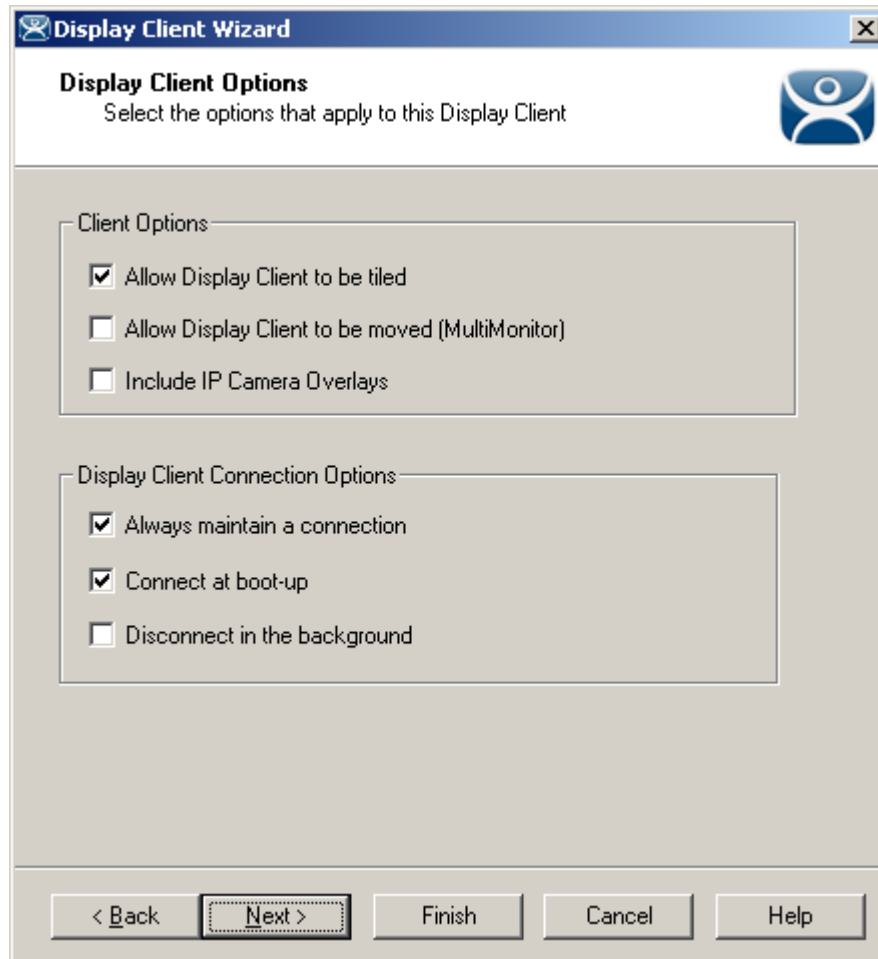
**Buttons:**

- **Permissions** - The button will launch the **Permissions** window that allows Permissions to be set for TermSecure. This is discussed in Permissions.

**Why Change from Default Settings:** The group needs a name and a type assigned to it.

This section covers **Terminal Shadow** Display Clients. Configure the Display Client by selecting **Terminal Shadow** from the **Type of Display Client** drop-down after naming the group.

Select the **Next** button to continue.



*Terminal Shadow Display Client –Display Client Options*

**Importance of Page:** This page allows the configuration of Display Client parameters

**Checkbox:**

- **Allow group to be tiled** – If checked, this allows the Display Client to be tiled in SessionTiling. See SessionTiling Options for details.
- **Allow Group to be moved (MultiMonitor)** – If checked, this allows a Display Client to be moved from one MultiMonitor screen to another. See MultiMonitor for details.
- **Include IP Camera Overlays** –This will allow IP Camera overlays to be added to this Display Client.
- **Always maintain a connection** – This keeps a session active, reconnecting and restarting if it is closed. If unchecked, the user can close a session and another session won't start automatically.
- **Connect at boot-up** – If checked, the terminal will start a session for this Display Client at boot up. If unchecked, a user action is required to start the session.

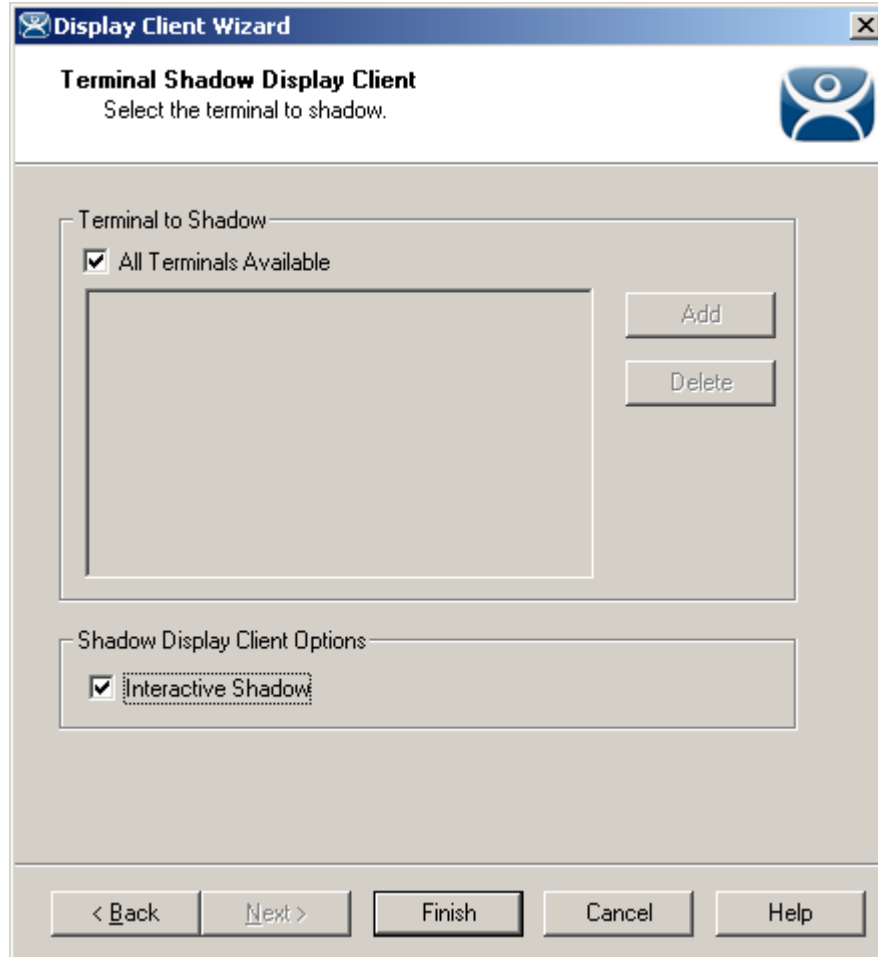
- **Disconnect in background** – If checked, a Display Client being used in a MultiSession configuration will disconnect once it is moved into the background. This could be done to require fewer resources.

**Why Change from Default Settings:** The **Always maintain a session for this group** and **Start a session at boot-up for this group** checkboxes, if unselected, will lower the demand on the terminal servers by allowing sessions to be closed until needed.

Select **Next** to continue, **Finish** to save and close, or **Cancel** to close without saving.

### **Terminal Shadow Display Client Page**

The Terminal Shadow Display Client page allows the selection of the terminal or terminals to be shadowed.



*Terminal Shadow Display Client – All Terminals Available*

**Importance of Page:** This page selects what terminals are available to be shadowed using Terminal-to-Terminal Shadowing.

**Checkbox:**

- **All Terminals Available** – This checkbox allows all terminals to be shadowed. Unselect it to limit Terminal-to-Terminal Shadowing to specific terminals.
- **Interactive Shadow** – This checkbox allows interactive shadowing of the terminals.

**Fields:**

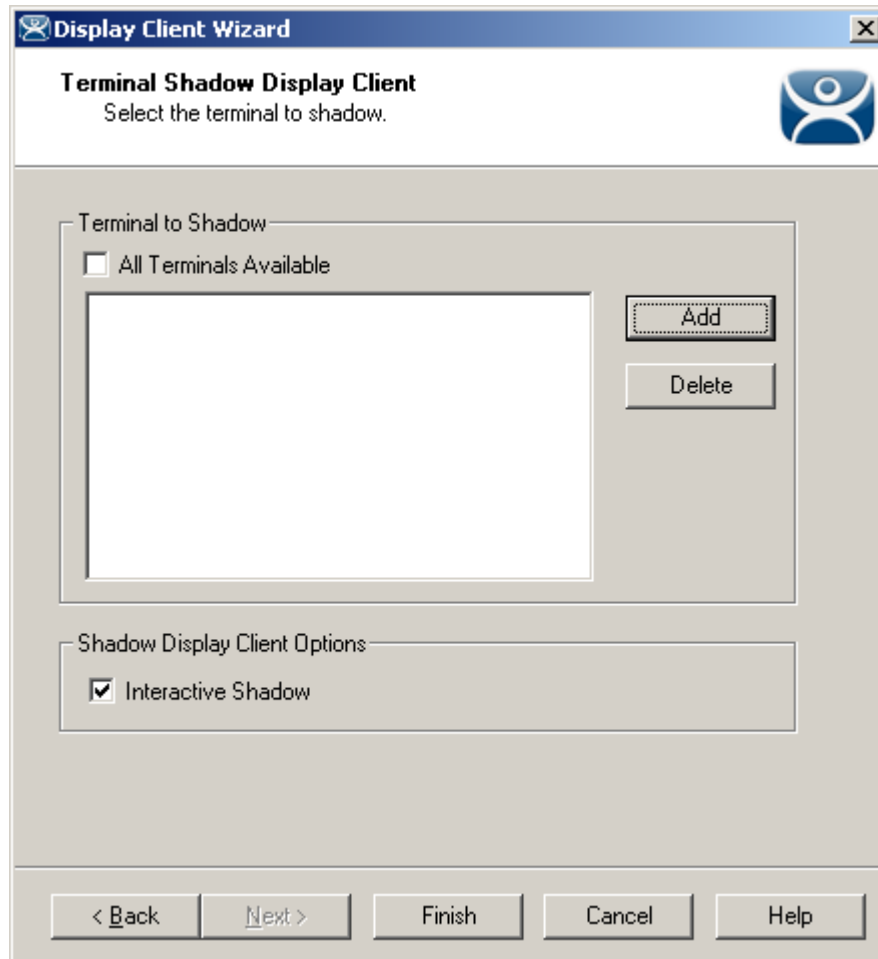
- **Terminal to Shadow** – This list box shows the terminals available to shadow.

**Buttons:**

- **Add** – This button adds terminals to the Terminal to Shadow list box when **All Terminals Available** is unselected.
- **Delete** – This button deletes a highlighted terminal from the Terminal to Shadow list box **when All Terminals Available** is unselected.

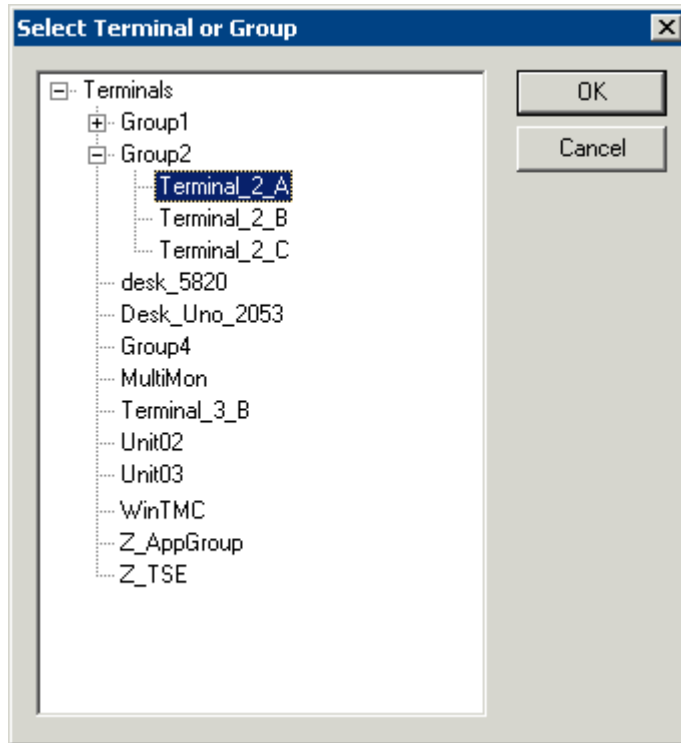
**Why Change from Default Settings:** The default setting grants permission to shadow all of the terminals. Unselecting the **All Terminals Available** checkbox allows specific terminals to be added. Additionally, multiple shadow groups can be created, each with a specific terminal or group of terminals.

By default the Shadow Group is configured to allow all terminals to be shadowed. Unselecting the **All Terminals Available** checkbox will allow the designation of specific terminals.



*Terminal Shadow Display Client –Select Terminals*

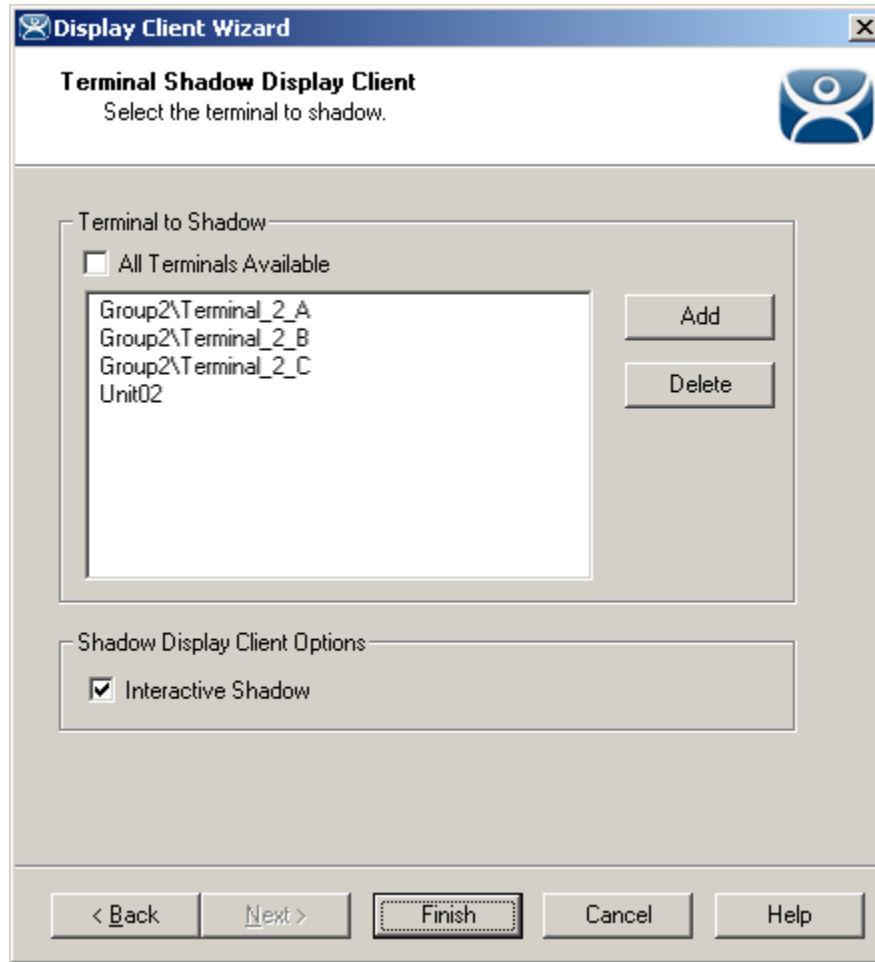
Select the **Add** button to launch the terminal selection window.



*Select Terminal or Group Window*

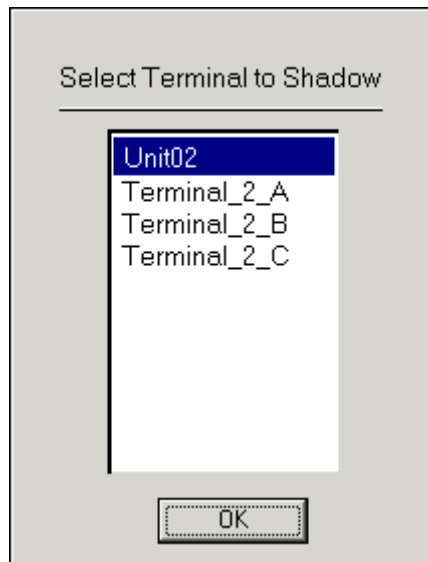
Select a terminal for shadowing by highlighting it in the **Select Terminal or Group** window and selecting the **OK** button. The window will close after each selection.

To add multiple terminals repeat the process by selecting the **Add** button on the **Terminal Shadow Display Client** page.



*Terminal Shadow Display Client – Selected Terminals*

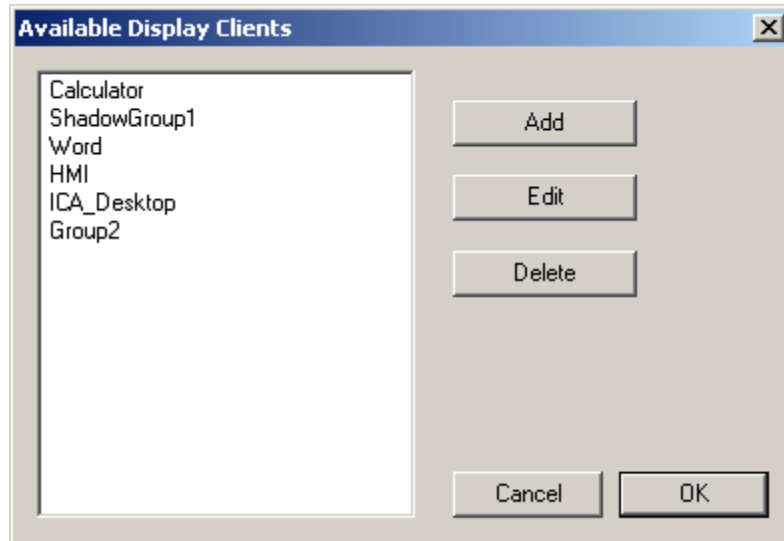
The Terminals to Shadow textbox will display the terminals added to the list.



*Terminal Selector*

When a terminal launches a Shadow Display Client that has multiple members a **Select Terminal to Shadow** window will be displayed to allow the selection of the terminal to shadow. Highlight the desired terminal and select the **OK** button.

### ***Display Client List Window***



*Available Display Clients*

After an Display Client is configured the Display Client List will show configured Display Clients.

Additional groups can be configured by selecting the **New Group** button.

The **Display Client List** wizard can be closed by selecting **OK**.