



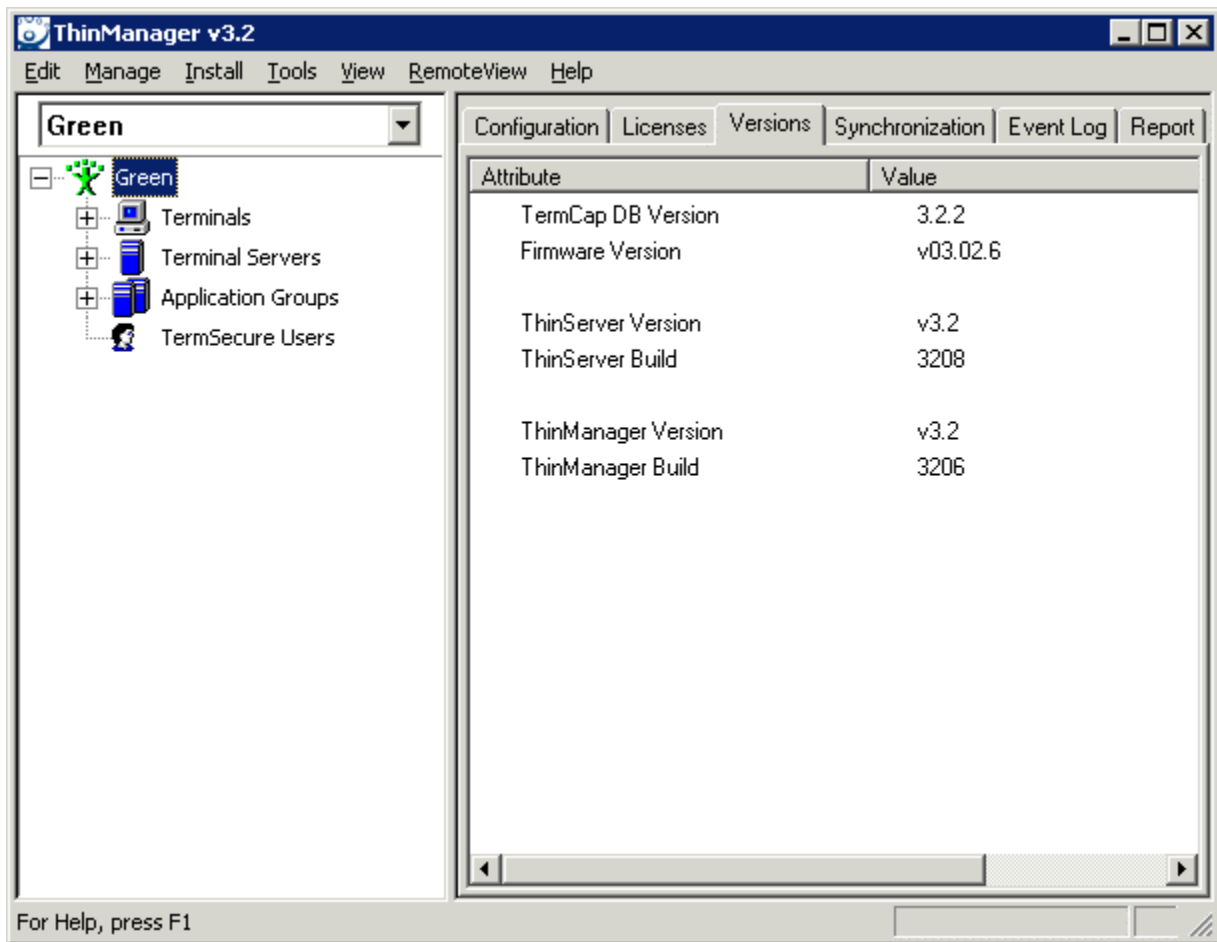
## ThinManager Version Numbers

Use the **F1** button on any page of a ThinManager wizard to launch Help for that page.

Visit [www.thinmanager.com/TechNotes/Intro/Manuals.shtml](http://www.thinmanager.com/TechNotes/Intro/Manuals.shtml) to download the full Manual or the ThinManual.

ThinManager has three components, the **ThinServer** service that is the engine that runs the system, the **ThinManager** interface that allows control of the ThinServer service, and the **firmware** that is loaded as the operating system on the thin clients.

Because these components can be updated independently of each other, one needs to use the **Versions** tab in ThinManager to determine the version numbers of the components.



*Versions Tab in ThinManager*

Highlight the ThinManager Server in the tree; "Green" is the computer in the example. Select the Version tab of the Details pane to view the build numbers.



## Build Numbers for ThinManager

<b>ThinManager 3.3 SP 1</b>		
7/6/2009	ThinManager Build	3310
	ThinServer Build	3312
<b>ThinManager 3.3</b>		
4/09/2009	ThinManager Build	3309
4/10/2009	ThinServer Build	3311
<b>ThinManager 3.2 SP1</b>		
10/16/2008	ThinManager Build	3206
	ThinServer Build	3208
<b>ThinManager 3.2</b>		
7/3/2008	ThinManager Build	3205
	ThinServer Build	3205
<b>ThinManager 3.1 SP2</b>		
7/28/2008	ThinManager Build	3022
	ThinServer Build	3020
<b>ThinManager 3.1 SP1</b>		
10/26/2007	ThinManager Build	3021
	ThinServer Build	3018
<b>ThinManager 3.1</b>		
6/27/2007	ThinManager Build	3019
	ThinServer Build	3015
<b>ThinManager 3.0 SP6</b>		
3/5/2007	ThinManager Build	3012
11/2/2006	ThinServer Build	3010
<b>ThinManager 3.0 SP5</b>		
10/16/2006	ThinManager Build	3009
	ThinServer Build	3009
<b>ThinManager 3.0 SP4</b>		
10/4/2006	ThinManager Build	3008
	ThinServer Build	3008
<b>ThinManager 3.0 SP3</b>		
7/31/2006	ThinManager Build	3007
	ThinServer Build	3007



<b>ThinManager 3.0 SP2</b>		
6/14/2006	ThinManager Build	3006
	ThinServer Build	3006
<b>ThinManager 3.0 SP1</b>		
5/9/2006	ThinManager Build	3004
	ThinServer Build	3004
<b>ThinManager 3.0</b>		
5/3/2006	ThinManager Build	3003
	ThinServer Build	3003
<b>ThinManager 2.6 SP2</b>		
5/10/2006	ThinManager Build	2586
	ThinServer Build	2586
<b>ThinManager 2.6 SP1</b>		
6/23/2005	ThinManager Build	2583
	ThinServer Build	2583
<b>ThinManager 2.6</b>		
11/14/2005	ThinManager Build	2582
	ThinServer Build	2582

## Firmware Version Numbers

<b>ThinManager 2.6</b>	v2.06.x
<b>ThinManager 3.0</b>	v3.00.x
<b>ThinManager 3.1</b>	v3.01.x
<b>ThinManager 3.2</b>	v3.02.x
<b>ThinManager 3.3</b>	v3.03.x

Older versions of ThinManager can run newer firmware. ThinManager 2.6 can use firmware v3.02.6, for example.