



Dual Touch Screens with a Video Splitter

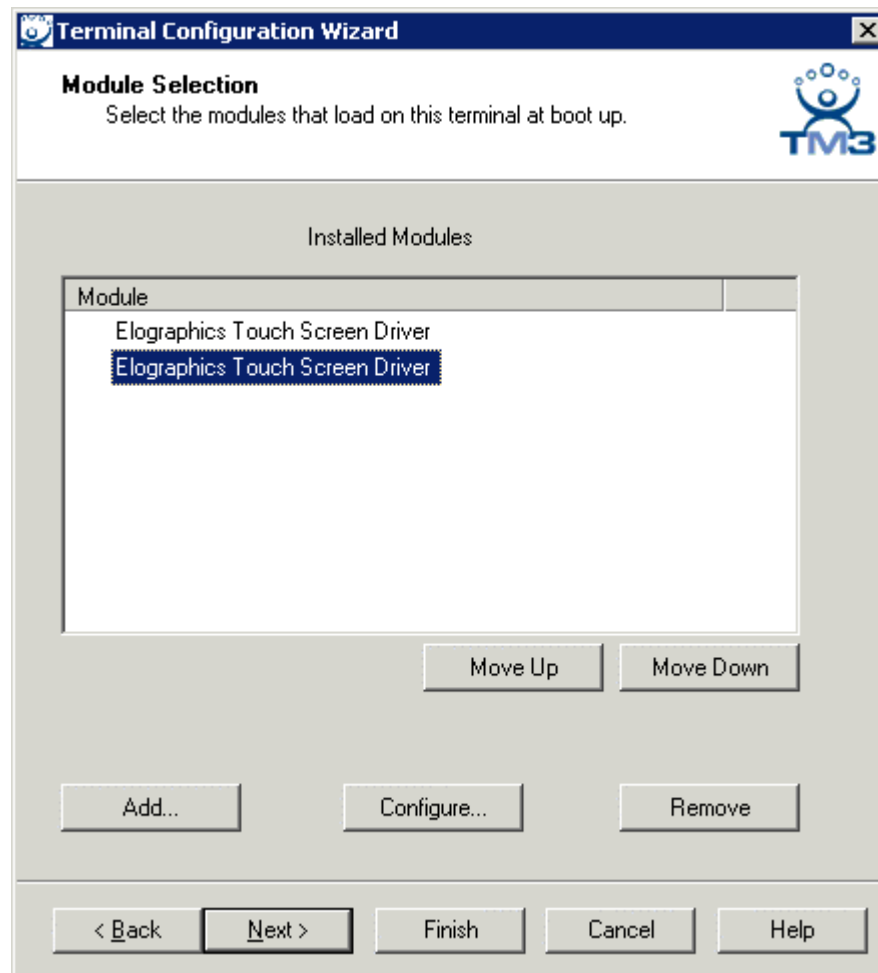
Use the **F1** button on any page of a ThinManager wizard to launch Help for that page.

Visit www.thinmanager.com/TechNotes/Intro/Manuals.shtml to download the full Manual or the ThinManual.

If you use a video splitter to put two touch screens on a thin client with a single video output, then you need to apply a touch screen module for each monitor in order to get the touch screens to work properly.

Add a Touch Screen Module for Each Monitor

Open the **Terminal Configuration Wizard** for the terminal by double-clicking on it in the ThinManager tree. Navigate to the **Module Selection Page** by selecting the **Next** button.



Second Touch Screen Module

Add a touch screen module for each monitor by selecting the **Add** button. We support over a dozen touch controllers so select the right one for each monitor. If you are using two different brands with two different touch screen controllers, select the right one for each monitor.



Configure Each Touch Screen

Each module will need to be configured to allow ThinManager to store the calibrations separately. This is done using the COM port and a monitor number.

Highlight the first touch screen module and select the **Configure** button to launch the **Module Properties** window.

If the touch screen uses a serial connector leave the Connection Type as Serial. If it uses USB change it to USB.

Highlight the Port (Serial Only) parameter if using serial and select the COM port being used by the monitor.

Highlight the Monitor Number parameter select "1" for the first monitor.

Select the **Done** button to accept the changes.

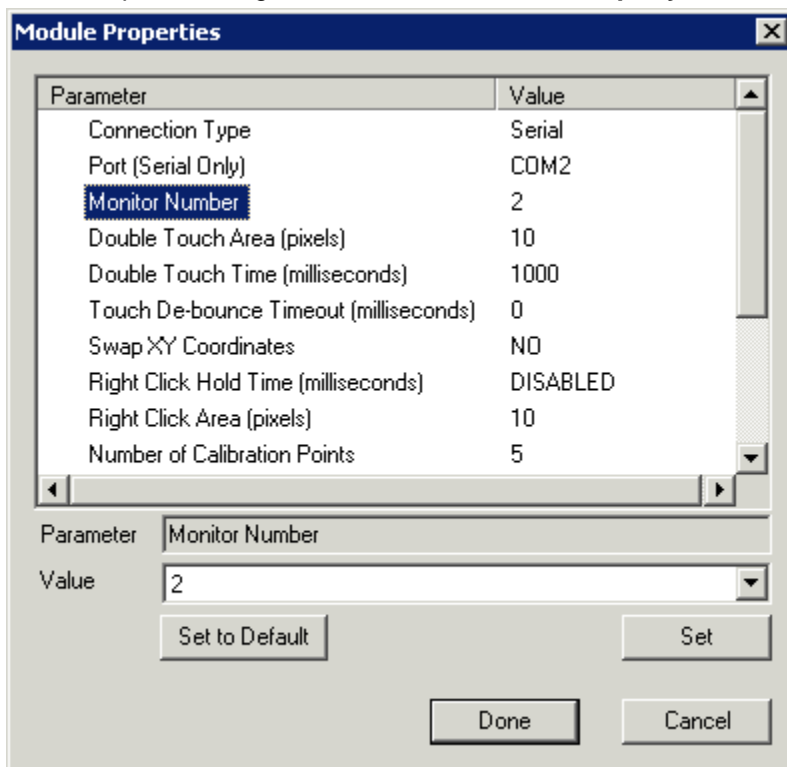
Note: Use the **Set** button to apply any value change for a parameter.

Repeat the actions for the second touch screen module for the second touch screen. Highlight the second touch screen module and select the **Configure** button to launch the **Module Properties** window. If the touch screen uses a serial connector leave the Connection Type as Serial. If it uses USB change it to USB.

Highlight the Port (Serial Only) parameter if using serial and select the COM port being used by the monitor.

Highlight the Monitor Number parameter select "2" for the first monitor.

Select the **Done** button to accept the changes and close the **Module Property** window..



Monitor Number

Select the **Finish** button on the **Module Selection** page to accept changes. The thin client needs restarted for the changes to take effect.