

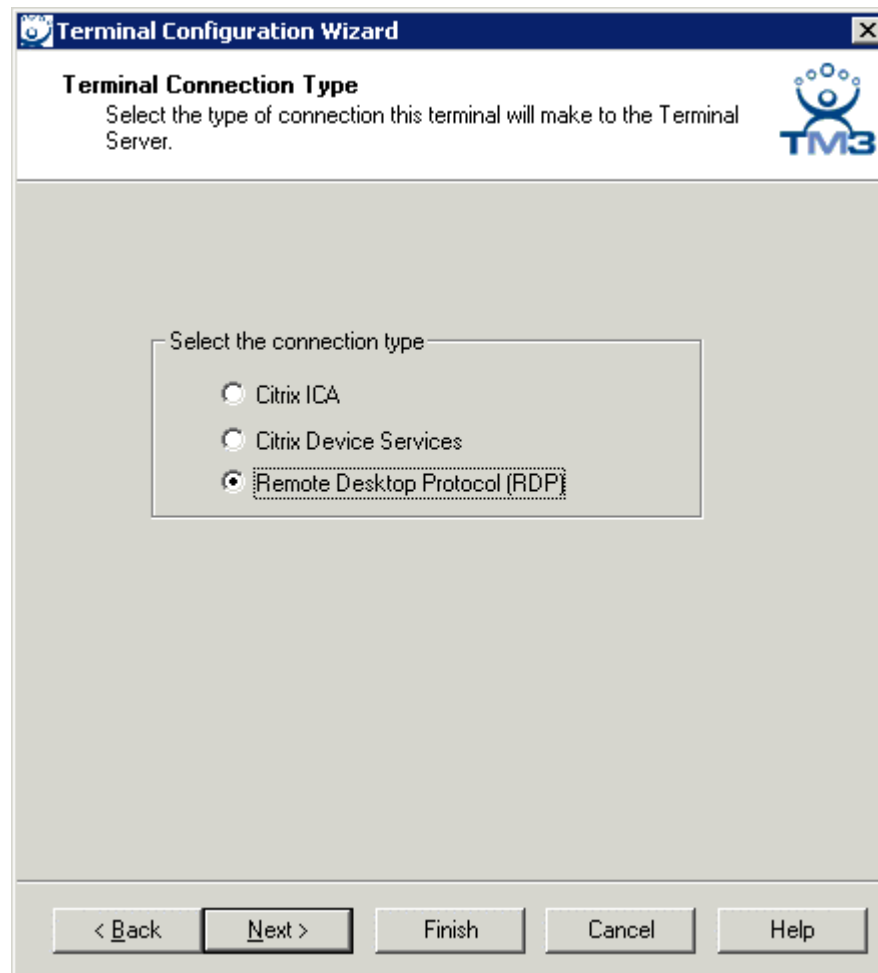


ICA Protocol

Use the **F1** button on any page of a ThinManager wizard to launch Help for that page.

Visit www.thinmanager.com/TechNotes/Intro/Manuals.shtml to download the full Manual or the ThinManual.

ThinManager Ready thin clients can use either the default Microsoft Remote Desktop Protocol (RDP) or the Citrix Independent Computing Architecture (ICA) protocol for communicating with terminal servers. Selection of the desired Client Communication Protocol is made on the **Terminal Connection Type** page of the Terminal Configuration Wizard.



Terminal Configuration Wizard - Connection Type

Thin clients use a client communication protocol to connect to the Terminal Servers. Select the desired protocol and select the **Next** button.

- Select the **Citrix ICA** radio button if an optional third-party Citrix product is to be used to provide the ICA protocol.
- Select the **Citrix Device Services** radio button if Citrix Device Services is to be used to provide the ICA protocol. Citrix Device Services is a legacy deployment of ICA for Windows 2000

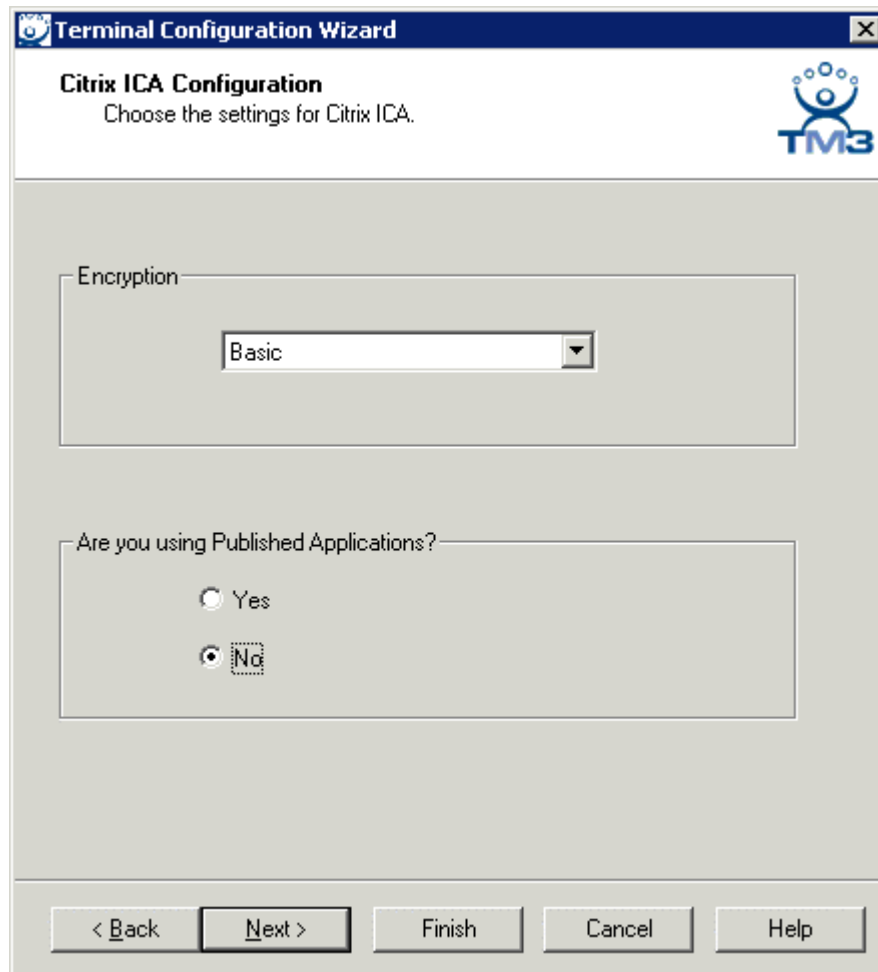


Terminal Servers but is no longer supported by Citrix. ThinManager Ready thin clients can connect to terminal servers that use Device Services, but no new Device Services terminal servers can be licensed.

- Microsoft Remote Desktop Protocol (RDP) is installed by default on all Windows Terminal Servers. The **Microsoft Remote Desktop Protocol (RDP)** radio button is selected by default unless you choose another protocol.

Selecting **Citrix ICA** offers additional configuration options before displaying the Terminal Server Selection. Selecting **Citrix ICA with Device Services** and **Remote Desktop Protocol (RDP)** will jump to the Terminal Server Selection.

Citrix ICA Configuration Page



Terminal Configuration Wizard - Citrix ICA Configuration

The **Citrix ICA Configuration** page is the first page of ICA specific configuration pages in the Terminal Configuration Wizard.

The **Encryption** drop-down box allows the selection of the Citrix encryption level.

Citrix ICA has a feature called **Published Applications**. If you are using Published Applications, select the **Yes** radio button, then select the **Next** button to continue to the **Citrix Published Application** dialog.

If you are not using Published Applications, select the **No** radio button, then select the **Next** button to continue to the **Terminal Server Selection** page.



Citrix Published Applications Page

Terminal Configuration Wizard

Citrix Published Applications

Enter the published application this terminal should run. Enter the ICA browser if necessary to help the terminal find the published application.

Published Application Name

ICA Browser

< Back Next > Finish Cancel Help

Terminal Configuration Wizard - Citrix Published Applications

Enter the name of the desired Published Applications in the **Published Applications Name** field. Do not use spaces in the name when creating a Published Application for Terminal Services.

Citrix uses ICA Browsers as part of the system. Because the ICA client may have problems detecting an ICA browser across a router or switch, an **ICA Browser** field is provided for entering the name of an ICA browser.

Select the **Finish** button to create the Terminal, or select the **Next** button to rejoin the main configuration path to configure more options.

The ICA Modules are advanced modules for advanced users of the ICA client communication protocol.

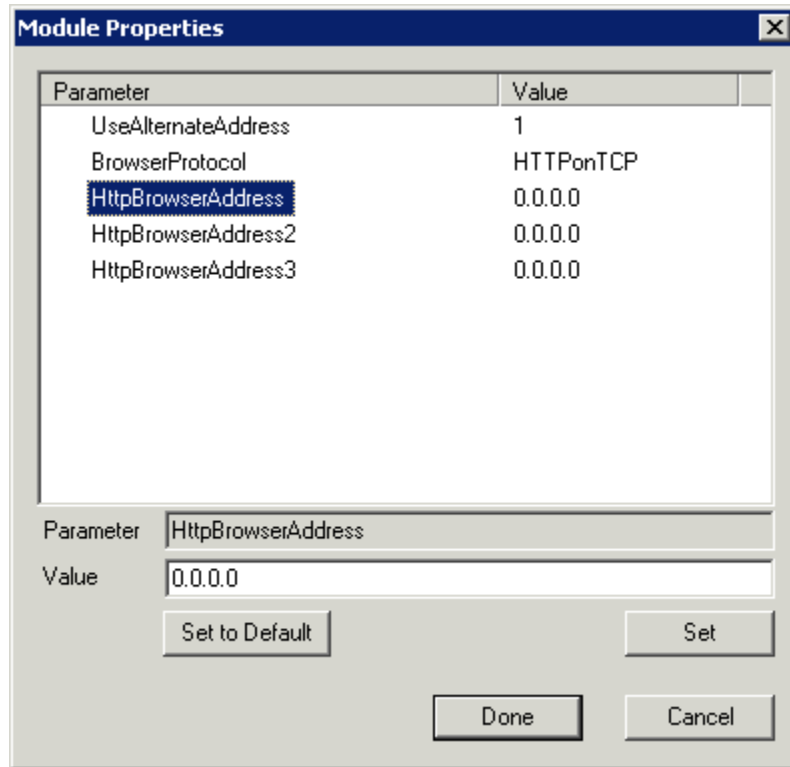


ICA Modules

ThinManager has a few modules to aid in Citrix deployments. They are listed under the **ICA** category of the modules.

Citrix ICA Use Alternate Address Module

The **Citrix ICA Use Alternate Address Module** is used by advanced Citrix users to specify connections to Citrix Servers.



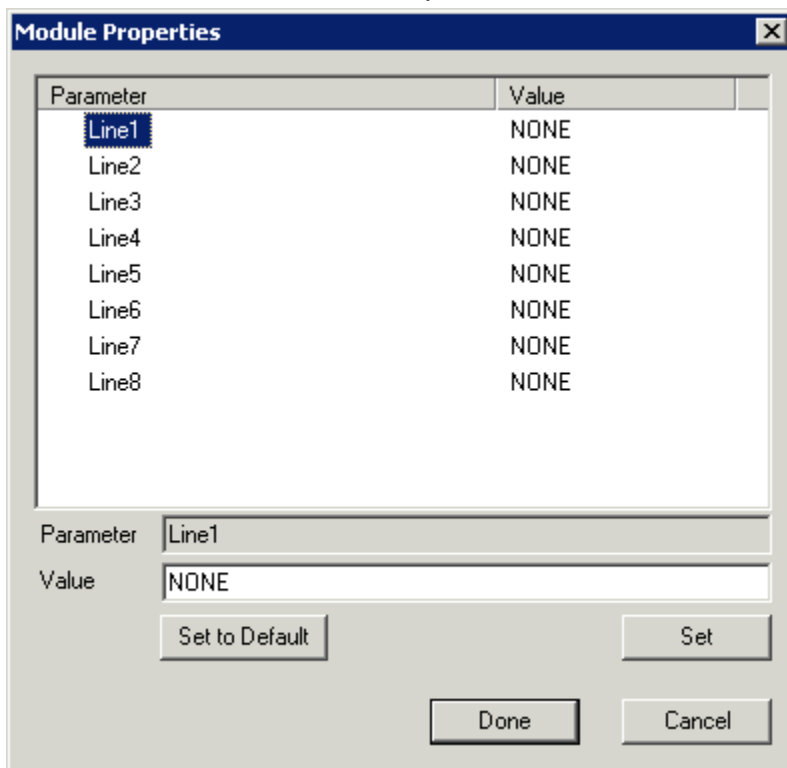
Citrix ICA Use Alternate Address Module Parameter

Configuration includes **Use Alternate Address**, **Browser Protocol**, and **Http Browser Addresses**. Highlight the desired parameter, enter the new value, and select the **Set** button.



Citrix ICA wfclient.ini Extension Module

The **Citrix ICA wfclient.ini Extension Module** is used by advanced Citrix users.



Citrix ICA wfclient.ini Extension Module Parameters

This module allows up to 8 strings of text to be added to the wfclient.exe for passing Citrix parameters. Highlight the desired line, enter the new value, and select the **Set** button.

ICA Client Version 6.0/ ICA Client Version 8.0

The **ICA Client Module Client Version 8.0** is a module that is not added to terminals but needs to be installed in ThinManager to be available for terminals using the ICA protocol. If a terminal is configured to use the ICA client communication protocol on the **Terminal Server Specification** page of the **Terminal Configuration Wizard**, the terminal will automatically download the v8.0 module to enable ICA functionality.

ThinManager uses v8.0 as the default. If a user wants to use the 6.0 version of the ICA protocol they will need to add the **ICA Client Module Client Version 6.0** to the terminal.